

COMMUNITY PROFILE



**COMMUNITY
SERVICE
COUNCIL**

Improving Oklahomans' Lives Through
Research, Planning & Action



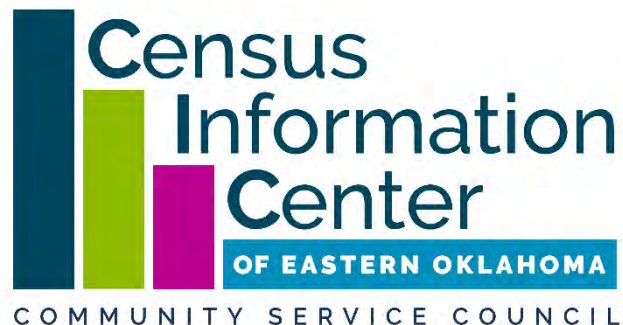
**Census
Information
Center**
OF EASTERN OKLAHOMA
COMMUNITY SERVICE COUNCIL

August 2021

ABOUT

The Tulsa County Community Profile is produced annually by the Community Service Council's Census Information Center of Eastern Oklahoma. Our goal is to inform the Tulsa community about demographic and socioeconomic trends, and to track data around key areas for community well-being.

This report also reveals needs and disparities in our community, and it is for this reason that our data are used by multiple entities to guide research, planning, programming and decision-making to improve lives and increase opportunity for all Tulsans.



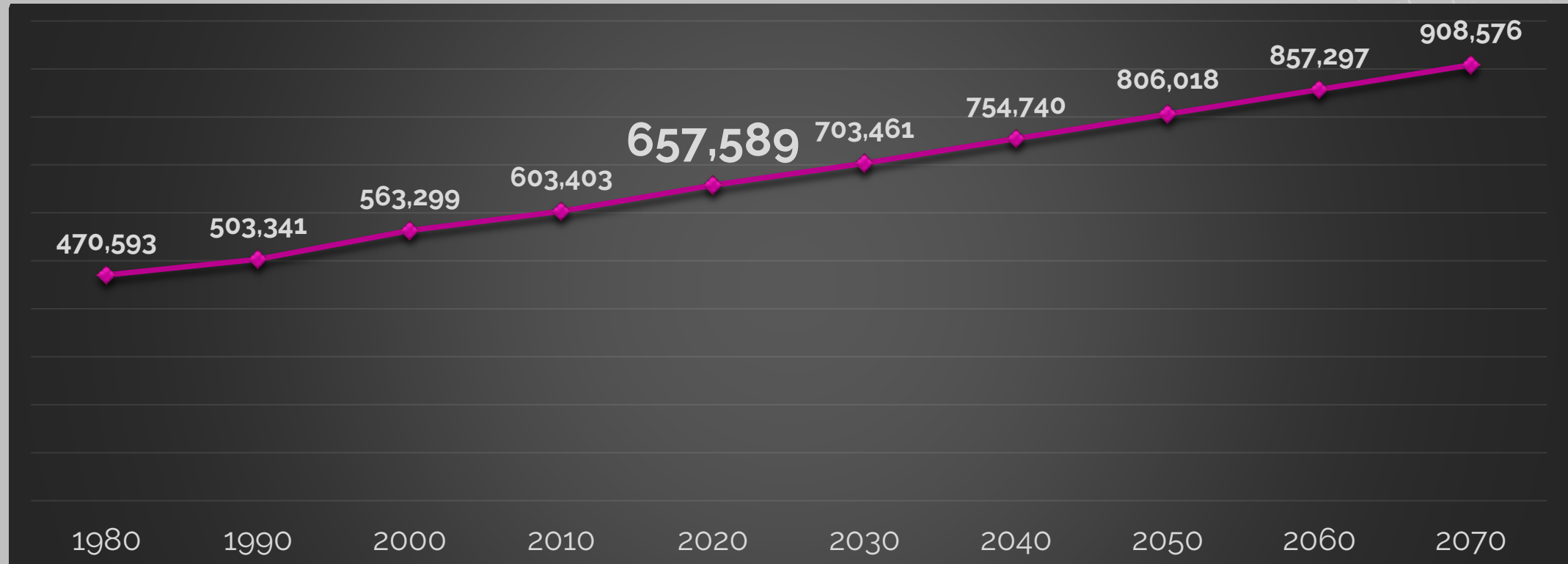
Learn more:
csctulsa.org/census

DEMOGRAPHIC TRENDS



TULSA COUNTY POPULATION CONTINUES TO GROW

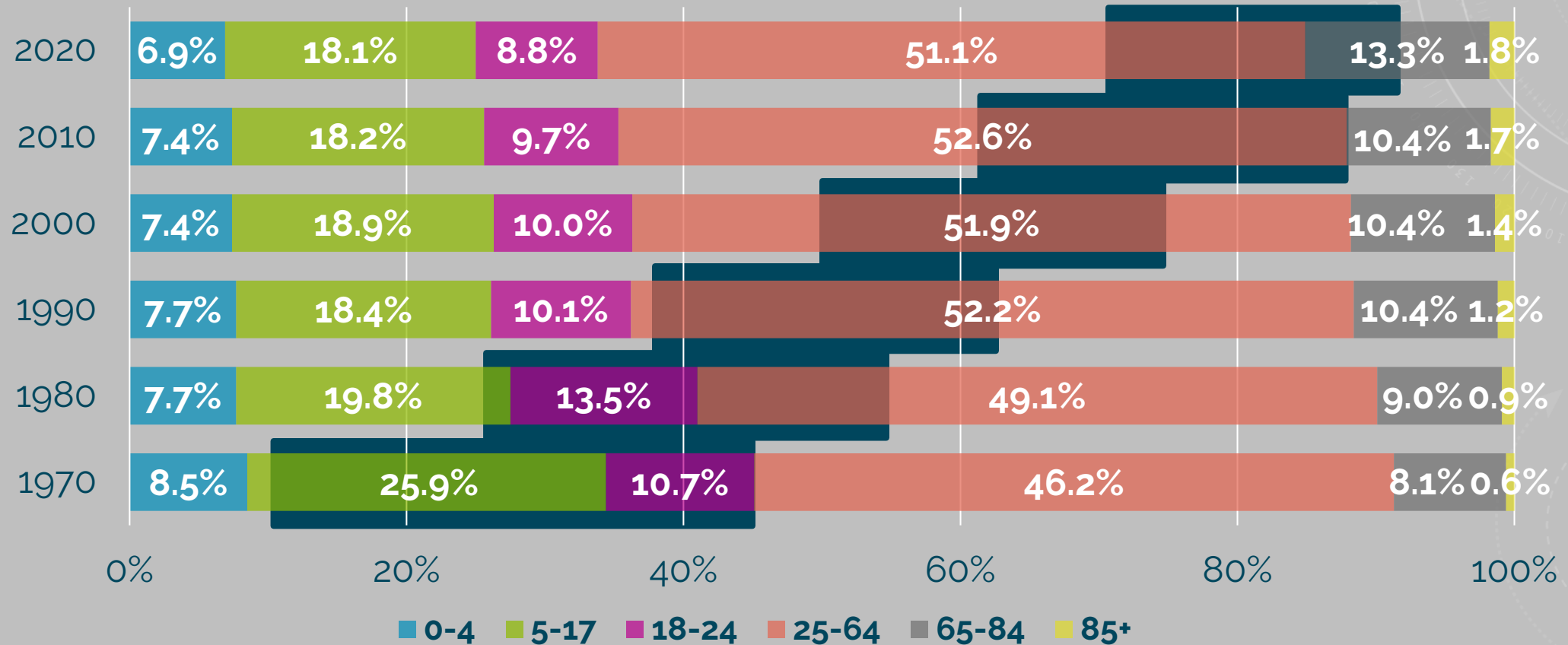
Population Trends And Projections, Tulsa County, 1980-2070



Source: Oklahoma Department of Commerce, "2012 Demographic State of the State Report: Oklahoma State and County Population Projections through 2075"; U.S. Census Bureau, Decennial Censuses; U.S. Census Bureau, 2020 Population Estimates.

OLDER POPULATION GROWING

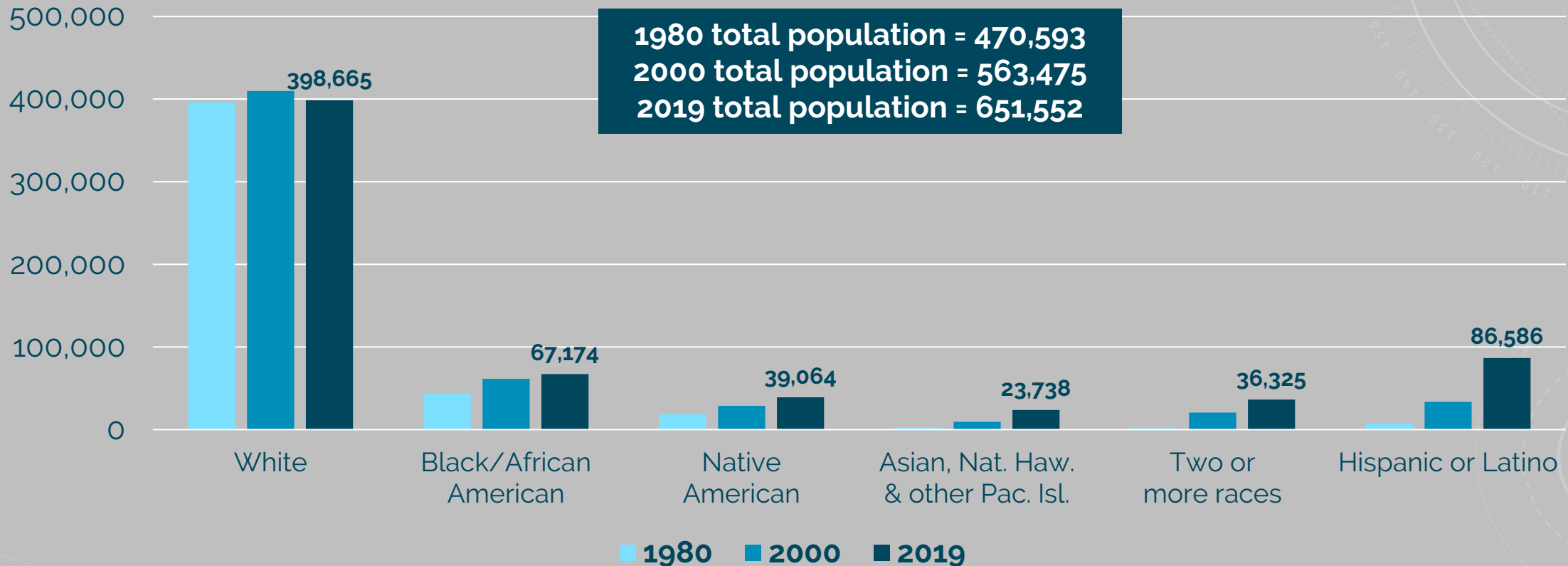
Population Trends By Age Group, Tulsa County, 1970 – 2020



Source: US Census Bureau. 2000 Census, 2010 Census, 2020 Population Estimates; National Historical Geographic Information System.

POPULATION INCREASE DUE TO MINORITY GROWTH

Racial And Ethnic Composition, Tulsa County, 1980, 2000, And 2019

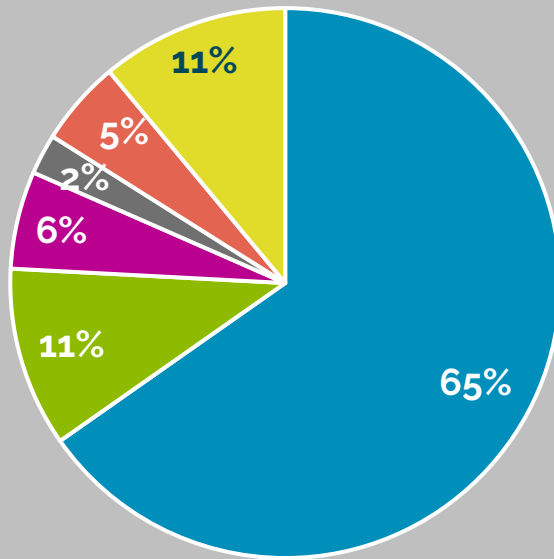


Source: U.S. Census Bureau, 2019 Population Estimates; U.S. Census Bureau, 2000 Population Estimates; U.S. Census Bureau, 1980 Census; Steven Manson, Jonathan Schroeder, David Van Riper, and Steven Ruggles, IPUMS National Historical Geographic Information System: Version 12.0 [Database], Minneapolis: University of Minnesota, 2017, <http://doi.org/10.18128/D050.V12.0>.

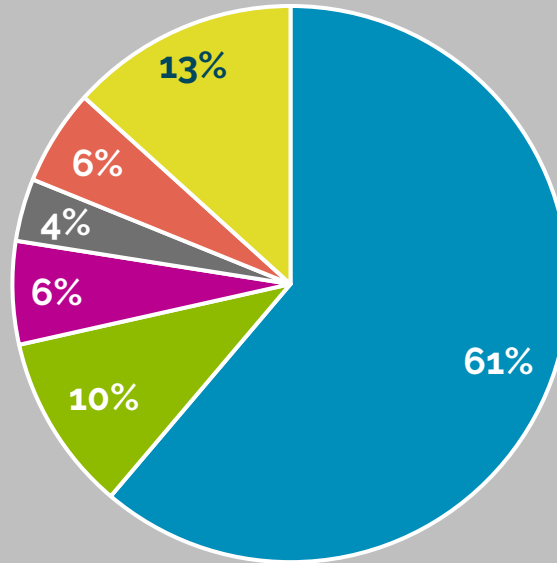
GROWING SHARES FOR PEOPLE OF COLOR

Race Distribution, Tulsa County, 2010 & 2019

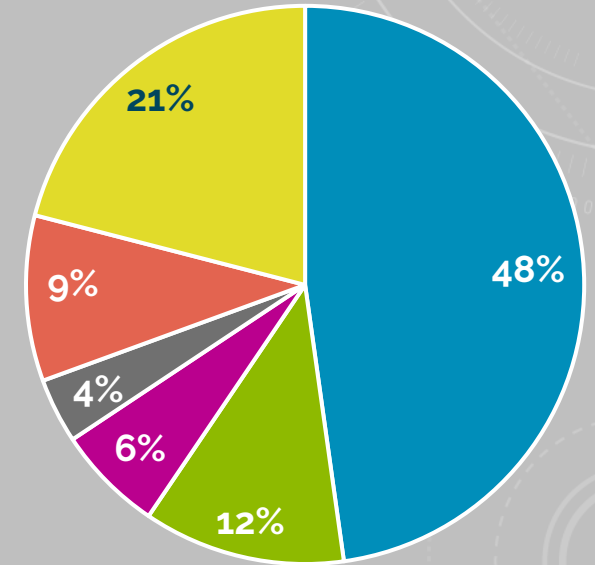
Total Population, 2010



Total Population, 2019



Under 5 Population, 2019

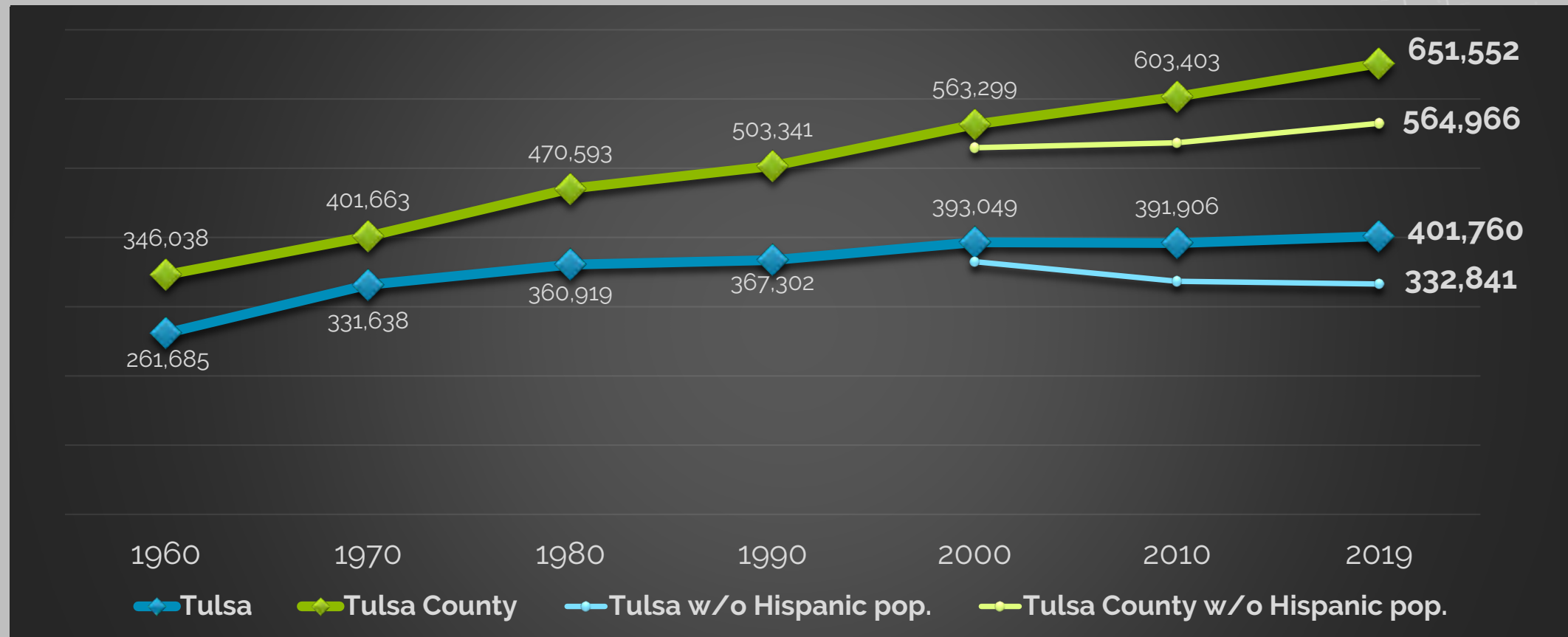


■ White ■ Black ■ Native American ■ Asian & NHPI ■ 2+ Races ■ Hispanic/Latino

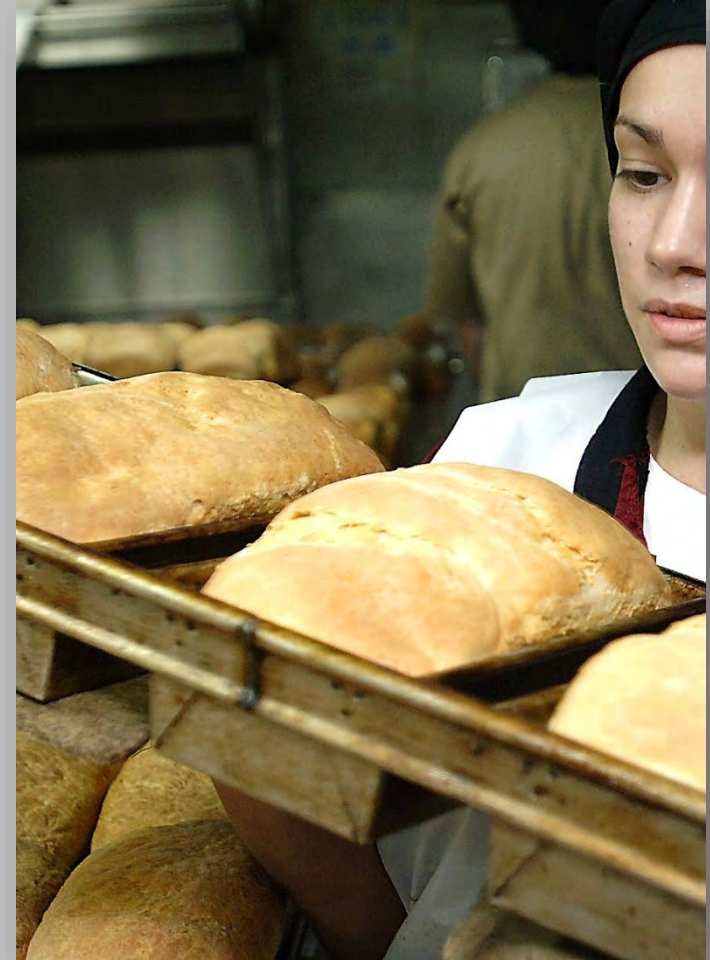
Source: U.S. Census Bureau, 2010 Decennial Census; U.S. Census Bureau, 2019 Population Estimates.

POPULATION INCREASE DRIVEN BY HISPANIC GROWTH

Actual & Hypothetical Trends In Population: Tulsa & Tulsa County, 1960 To 2019



ECONOMIC TRENDS



POVERTY WAGE FAR BELOW LIVING WAGE

Comparison Of Living Wage To Poverty Wage, Tulsa County, 2021

| Family Size & Composition | Living Wage (annual) | Poverty Guidelines (annual) | Dollar Difference | Living Wage Percent of Poverty |
|--|----------------------------|-----------------------------|-------------------|--------------------------------|
| One employed adult | \$28,454 (\$13.68/hour) | \$12,880 (\$6.19/hour) | \$15,574 | 221% |
| One employed adult & one child | \$60,653 (\$29.16/hour) | \$17,420 (\$8.38/hour) | \$43,233 | 348% |
| One employed adult & two children | \$75,046 (\$36.08/hour) | \$21,960 (\$10.56/hour) | \$53,086 | 342% |
| Two adults (one employed) & two children | \$65,042 (\$31.27/hour) | \$26,500 (\$12.74/hour) | \$38,542 | 245% |

Notes: Employment refers to full-time, year-round employment.

Source: Massachusetts Institute of Technology, Department of Urban Studies and Planning, Amy Glasmeier, "Living Wage Calculator" 2021 Update; Federal Register Notice, 02/01/2021, Annual Update of the HHS Poverty Guidelines.

MANY FAMILIES EARN LESS THAN LIVING WAGE

Wage Comparisons For Family Of Three, Tulsa County, 2021

Annual Wage

\$100,000

\$80,000

\$60,000

\$40,000

\$20,000

\$0

Welfare wage

Minimum wage

Poverty wage

185% poverty wage

200% poverty

Median family income

Living Wage: \$75,046
(\$36.08 hourly)

\$11,664
(\$5.61/hr.)

\$15,312
(\$7.25/hr.)

\$21,960
(\$10.56/hr.)

\$40,626
(\$19.53/hr.)

\$43,920
(\$21.12/hr.)

\$96,134
(\$46.22/hr.)

\$67,752
(\$32.57/hr.)

\$43,846
(\$21.08/hr.)

\$26,337
(\$12.66/hr.)

Married couple families

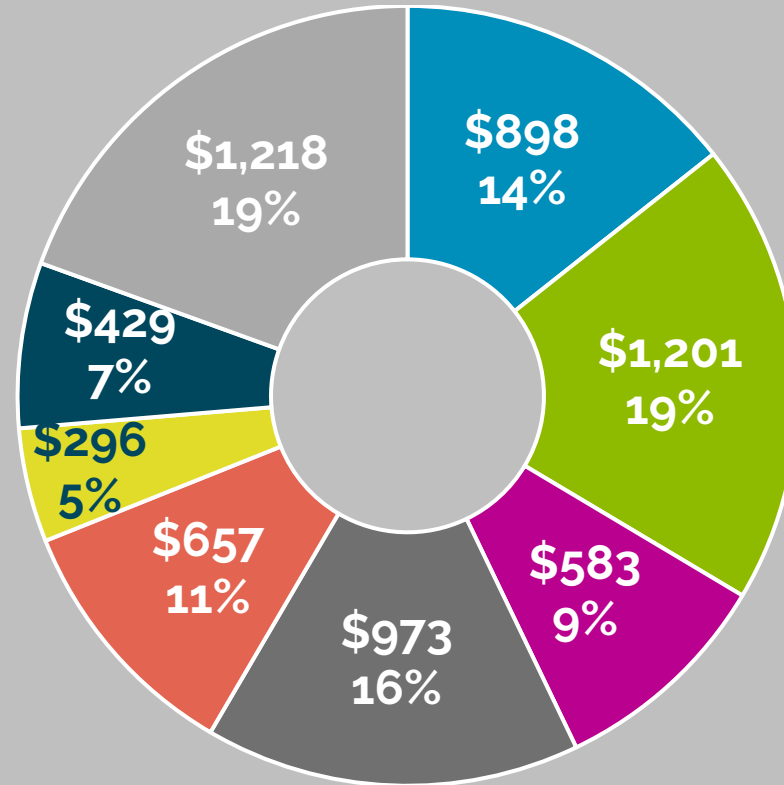
All families

Male-headed families

Female-headed families

NOTHING TO SPARE FOR FAMILY EARNING LIVING WAGE

Monthly Budget For Family Of Three At Living Wage, Tulsa County, 2021

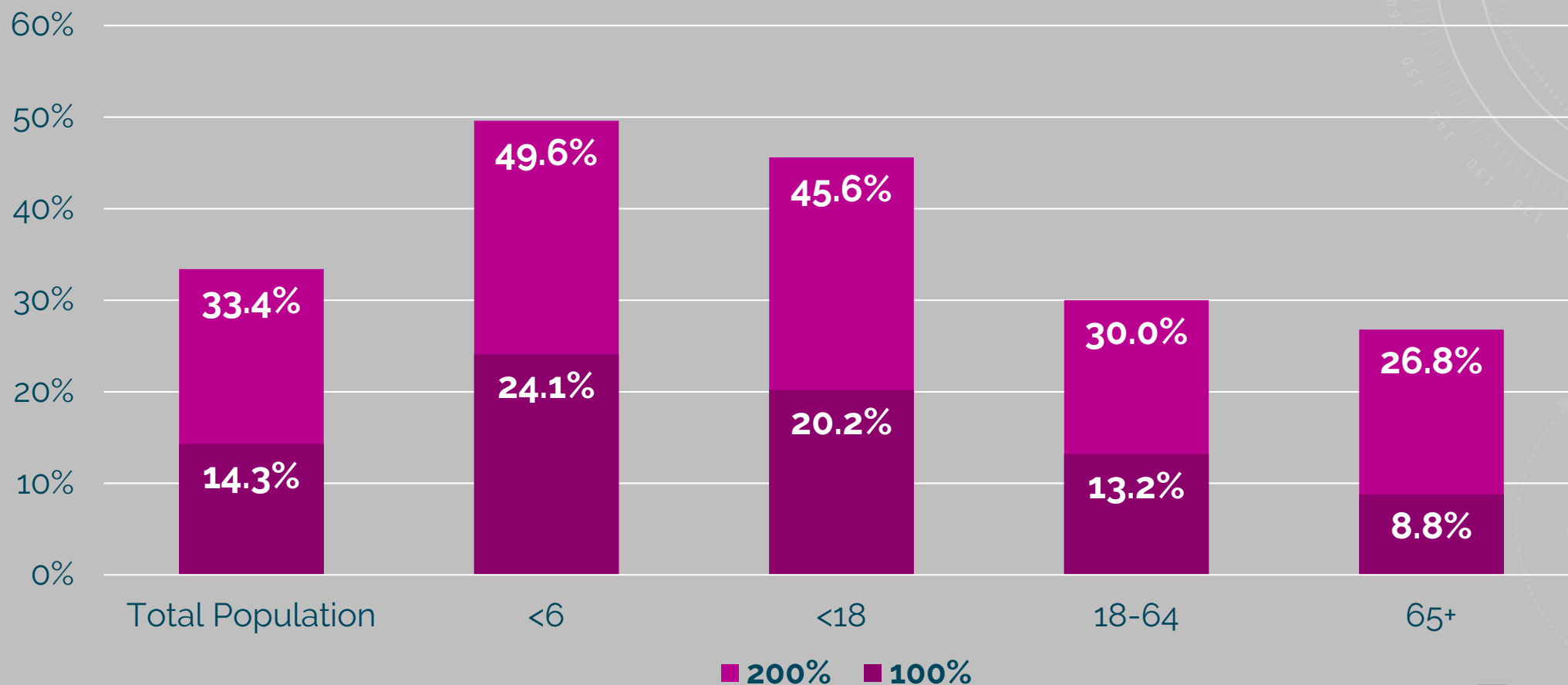


Living Wage = \$6,254 per month

- Housing
- Child Care
- Food
- Transportation
- Medical
- Civic
- Other
- Taxes

CHILDREN MOST IMPACTED BY LOW WAGES

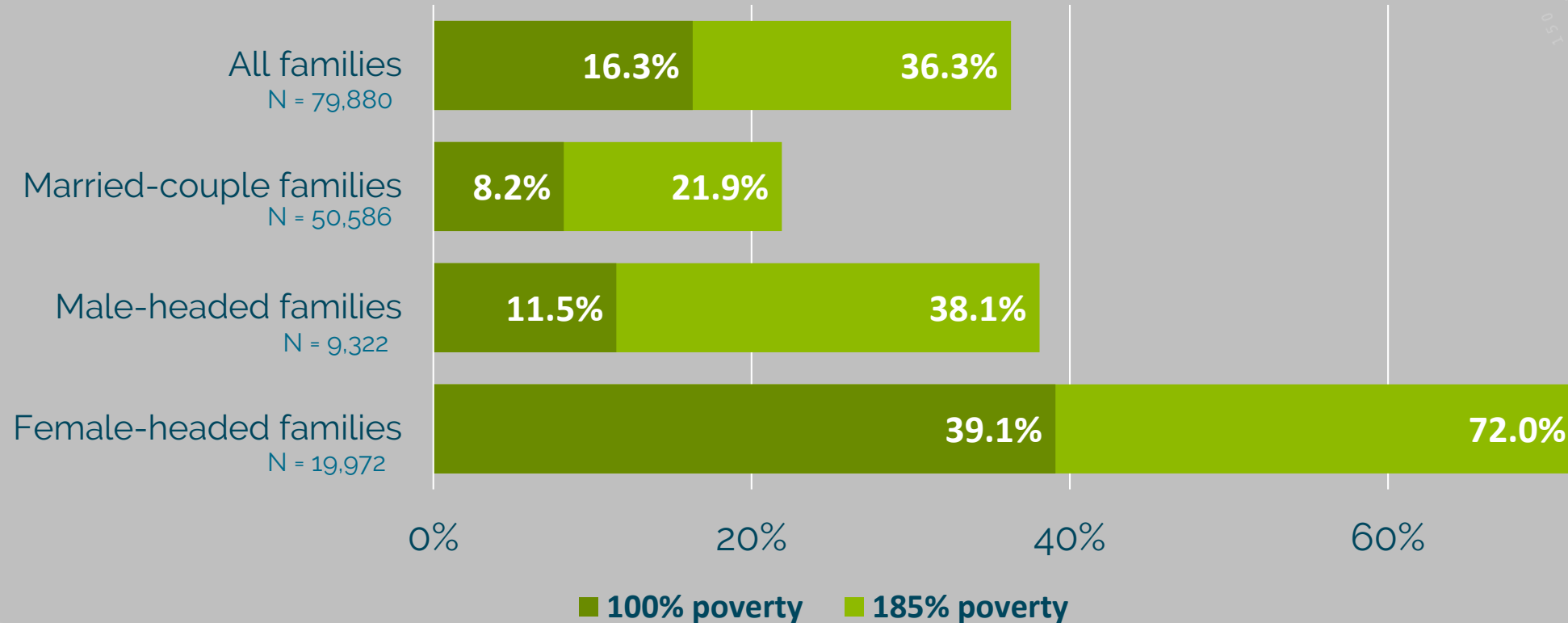
Ratio Of Income To Poverty By Age, Tulsa County, 2019



Source: US Census Bureau, 2019 American Community Survey.

MANY FEMALE-HEADED FAMILIES IN CRISIS

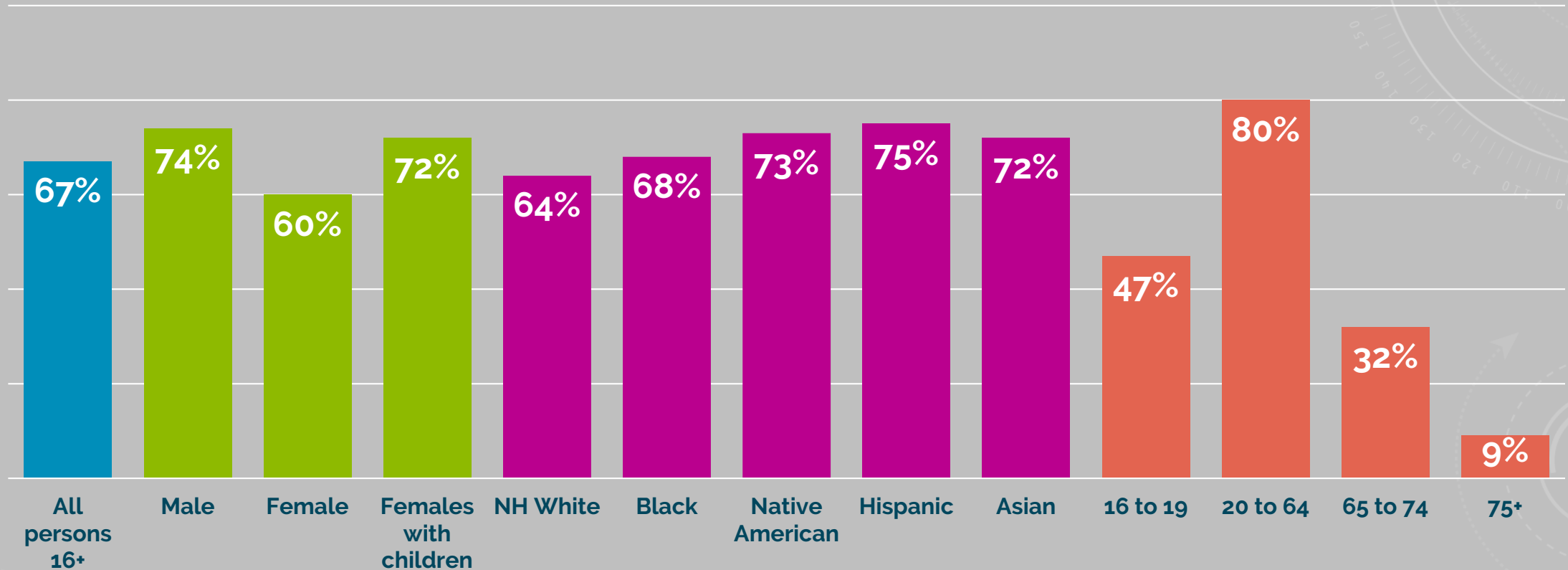
Poverty Rates For Families With Children Under Age 18, Tulsa County, 2019



Source: US Census Bureau, 2019 American Community Survey.

MOST PEOPLE ARE IN LABOR FORCE

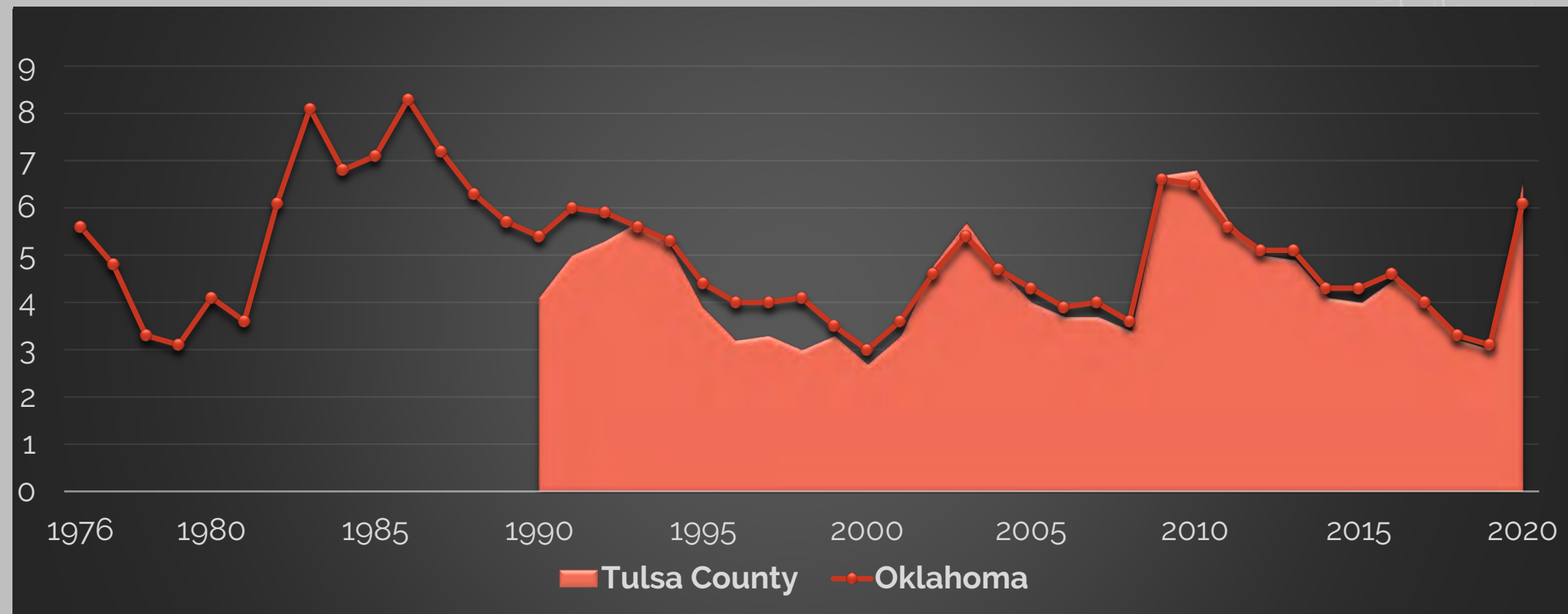
Participation In The Labor Force, Tulsa County, 2019



Source: US Census Bureau, 2019 American Community Survey.

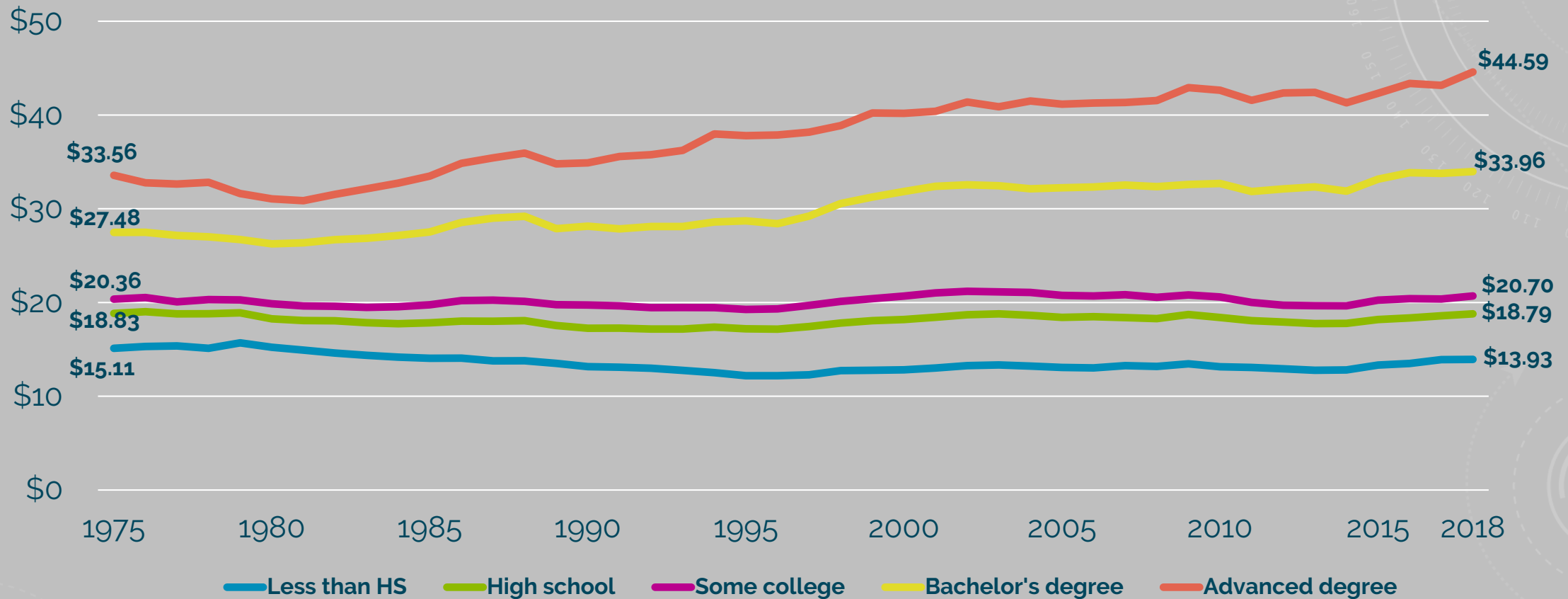
UNEMPLOYMENT RATES FALLING PRIOR TO COVID

Unemployment Rates, Tulsa County & Oklahoma, 1976 Through 2020



REAL WAGE INCREASE ONLY FOR DEGREE HOLDERS

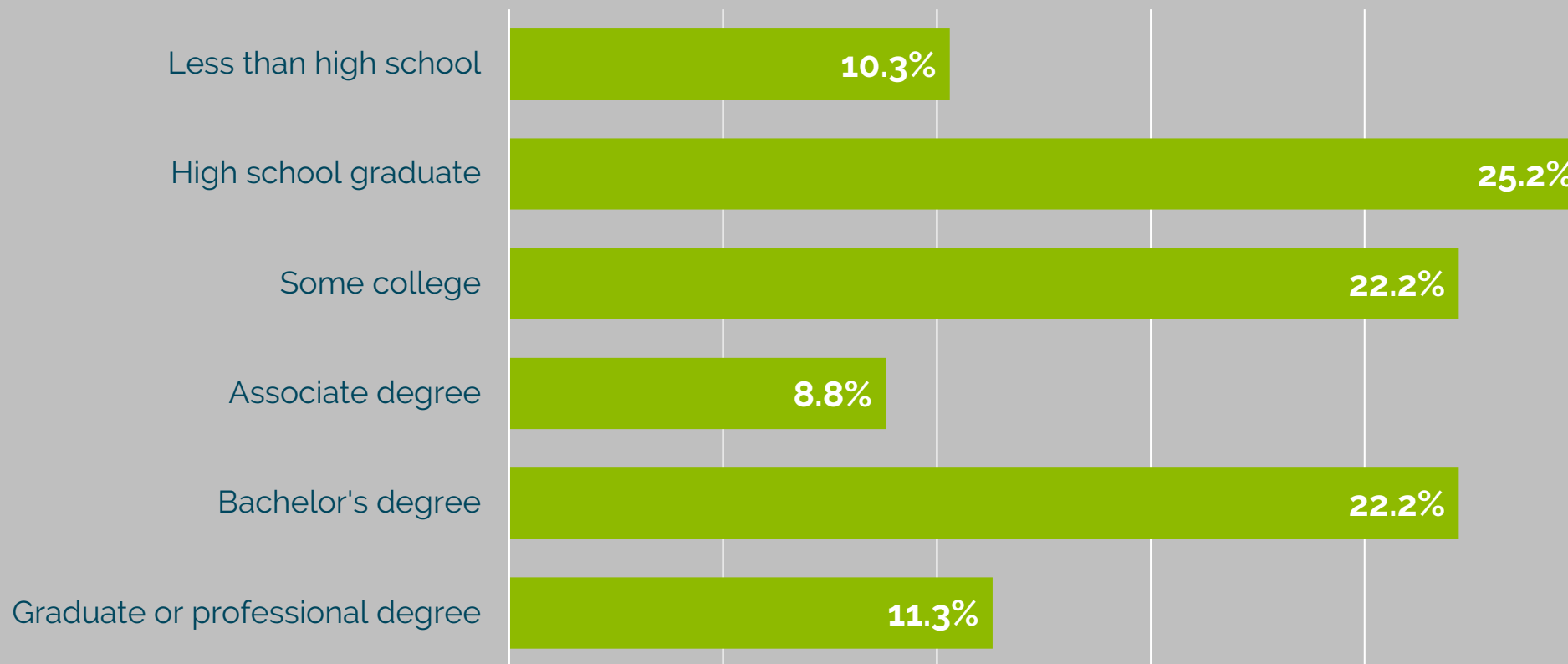
Wages By Education Level (2019 Dollars), United States, 1975-2019



Source: Economic Policy Institute, State of Working America Data Library, Wages by Education.

FOUR OUT OF TEN HAVE EARNED COLLEGE DEGREE

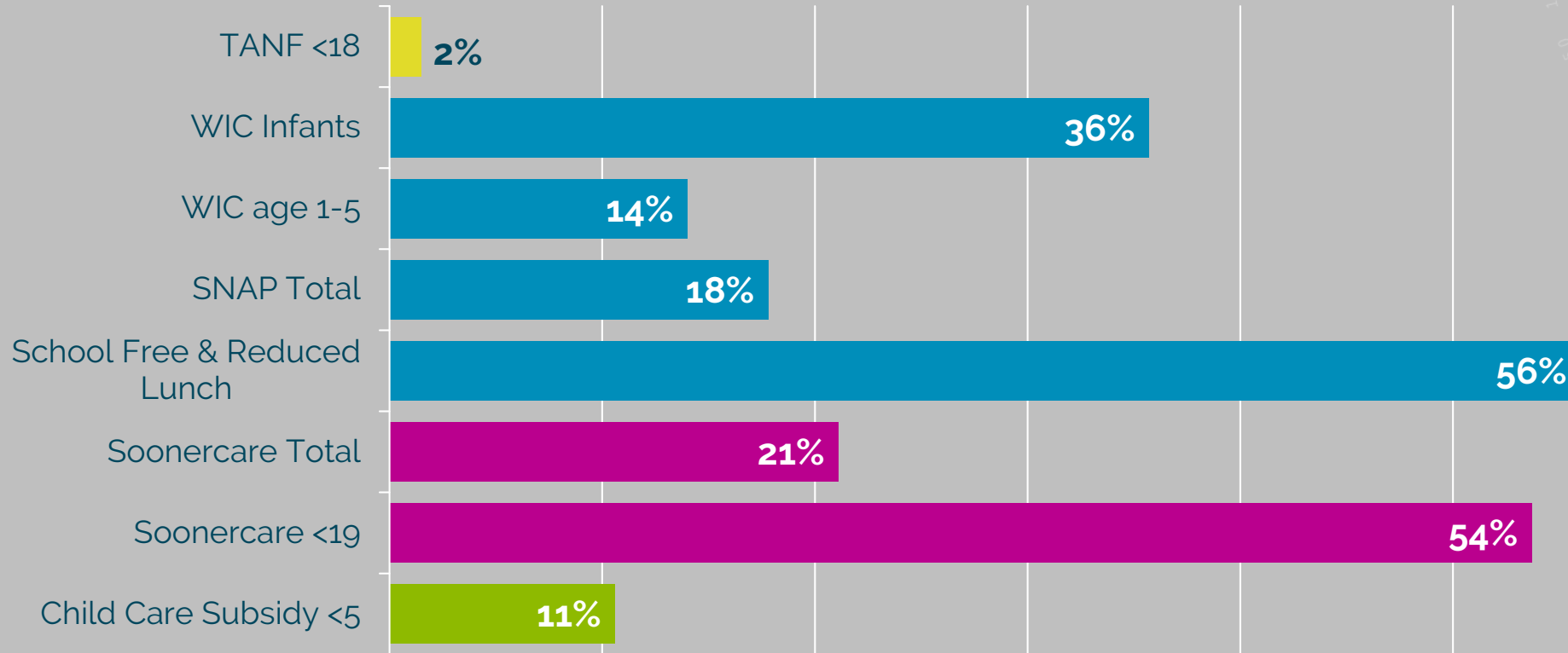
Educational Attainment For Persons Age 25 & Over, Tulsa County, 2019



Source: US Census Bureau, 2019 American Community Survey.

MANY RELY ON ASSISTANCE FOR BASIC NEEDS

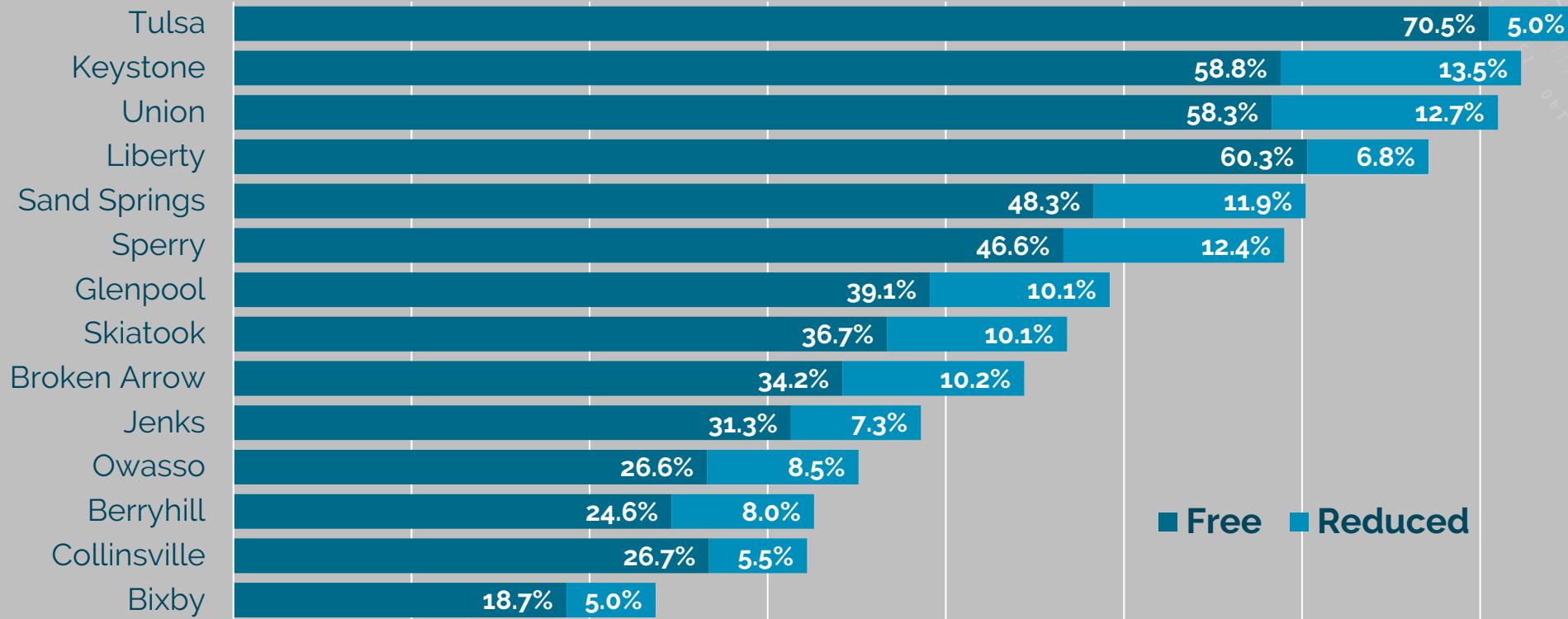
Participation In Public Assistance Programs, Tulsa County, 2020



Source: Oklahoma Dept. of Human Services 2019 Annual Report; Oklahoma State Dept. of Education, Low Income Report for 2019-20; Oklahoma State Dept. of Health-WIC service, Caseload Report, March 2020; Oklahoma Health Care Authority, Fast Facts, April 2020; US Census Bureau, 2018 Population Estimates.

MOST STUDENTS RELY ON FREE & REDUCED LUNCH

Free & Reduced Lunch Participation By District, Tulsa County, SY 2019-20

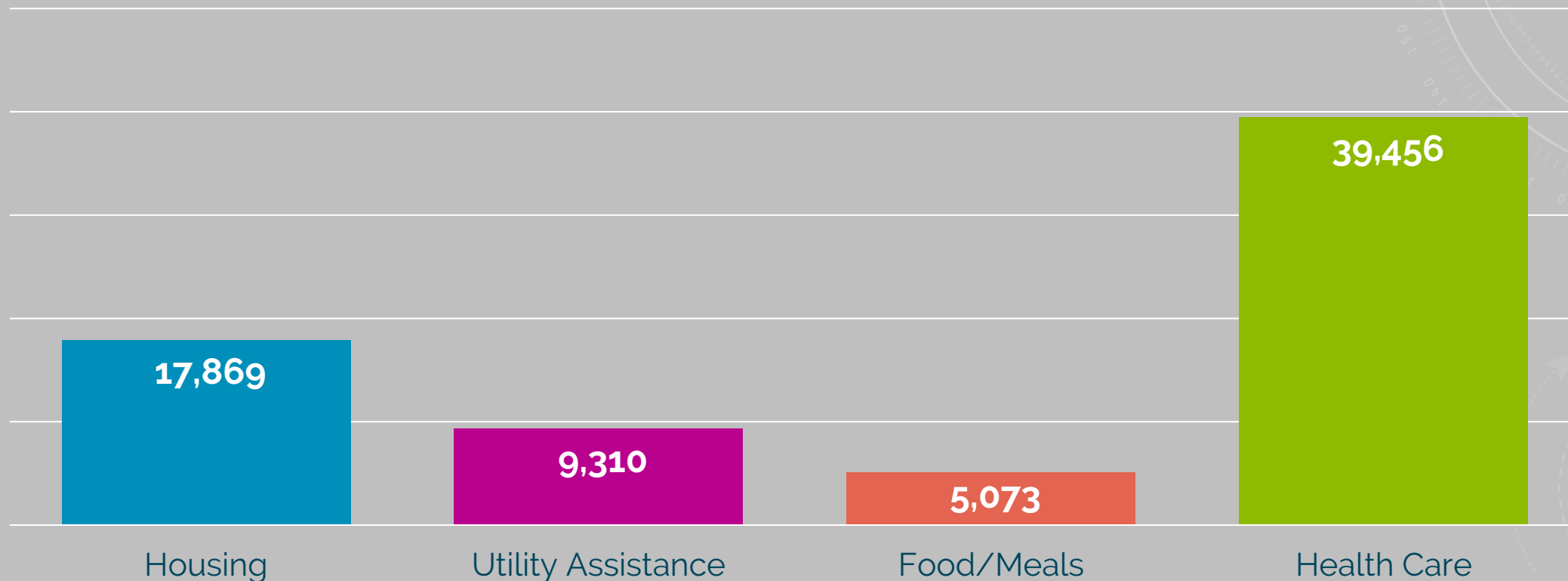


Note: Data for participation in free and reduced lunch program for Bixby and Tulsa district are estimates as actual values have been redacted by OSDE; the free plus reduced lunch sums are correct.

Source: Oklahoma State Department of Education, Low Income Report, 2019-20.

BASIC NEEDS TOP THE LIST FOR 211 CALLERS

Top Need Contact Categories, 211 Eastern Oklahoma, January-July, 2021

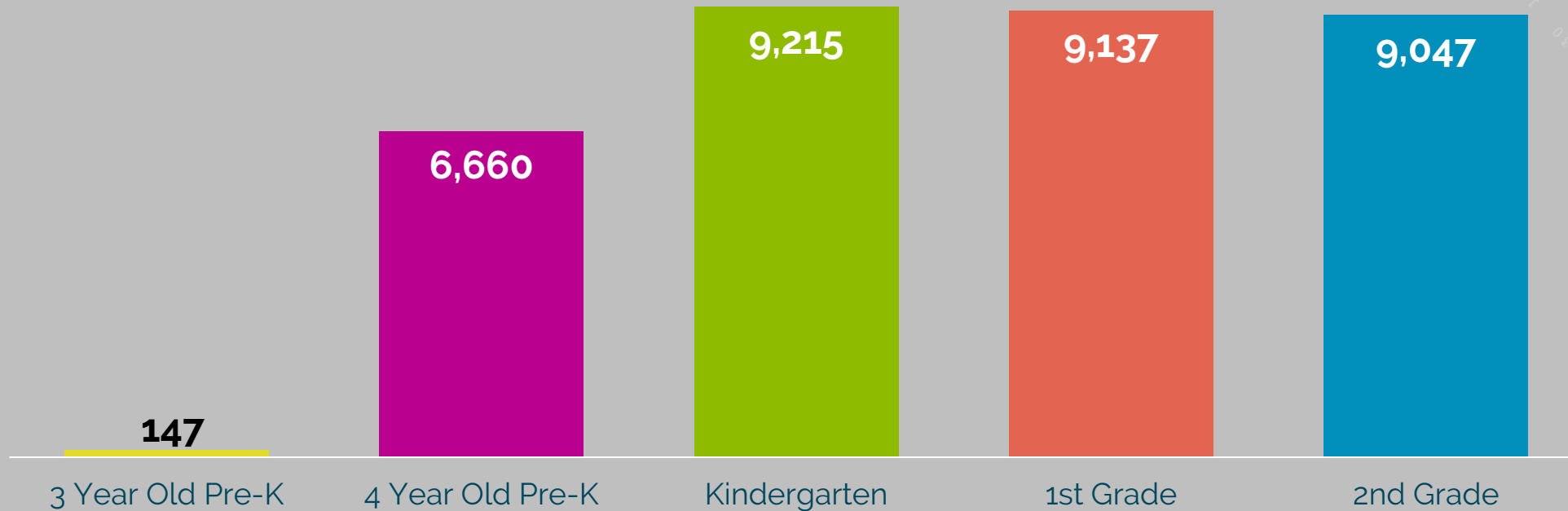


EDUCATION, EARLY CARE & LEARNING



MANY CHILDREN NOT ATTENDING PUBLIC PRE-K

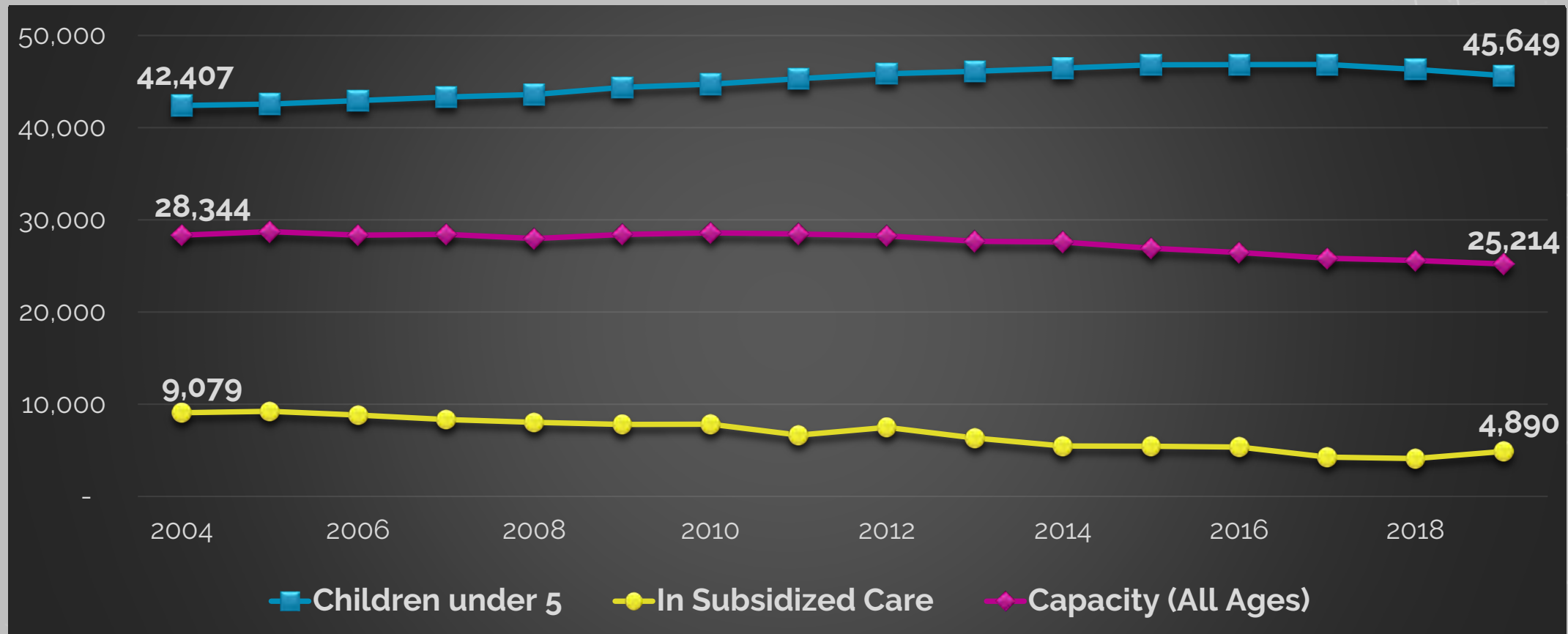
Public & Charter School Enrollment, Tulsa County, SY 2019-20



Source: Oklahoma State Department of Education, October 1, 2019, Student Enrollment.

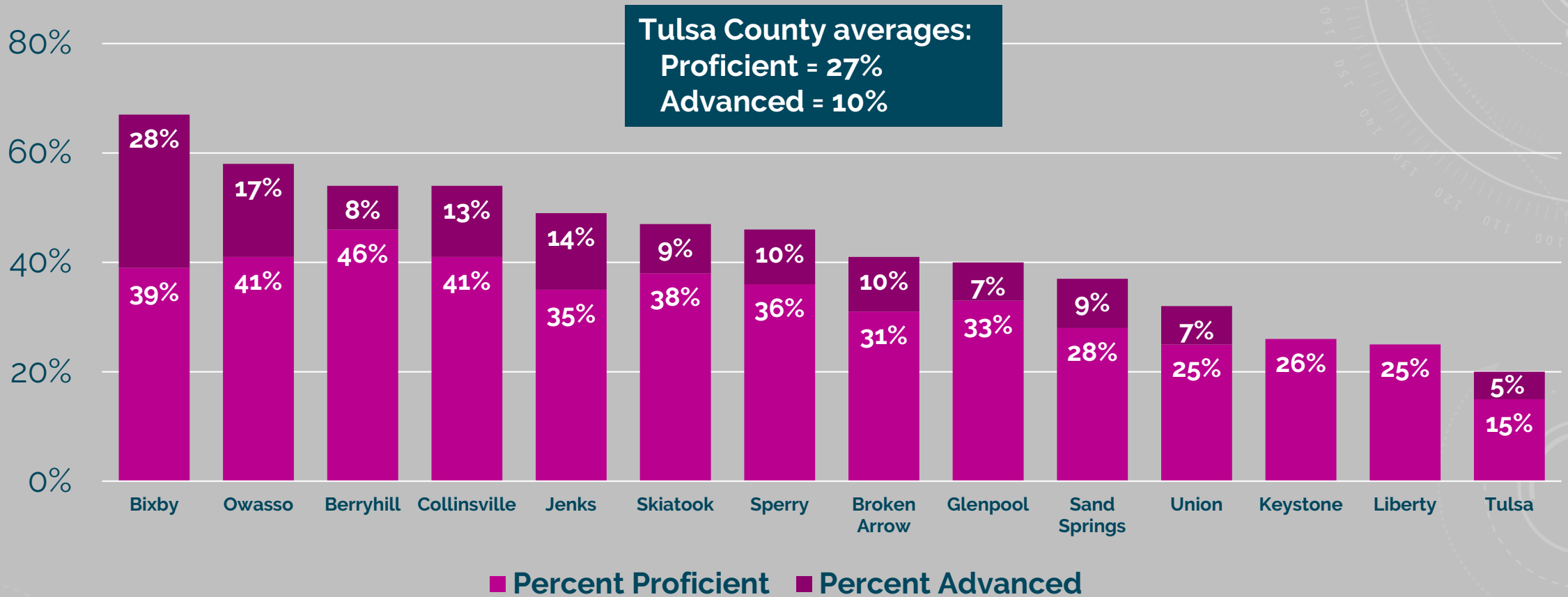
DECLINING CAPACITY & CHILDREN IN CHILD CARE

Trends: Population, In Child Care, & Capacity, Tulsa County, 2004-2019



MOST THIRD GRADERS NOT PROFICIENT IN ELA

Third Grade English Language Arts Proficiency, Tulsa Co. Districts, SY 2018-19



Note: Percent scoring advanced for Keystone and Liberty school districts are not available.

Source: Oklahoma State Department of Education, OSTP Assessments, 2018-19.

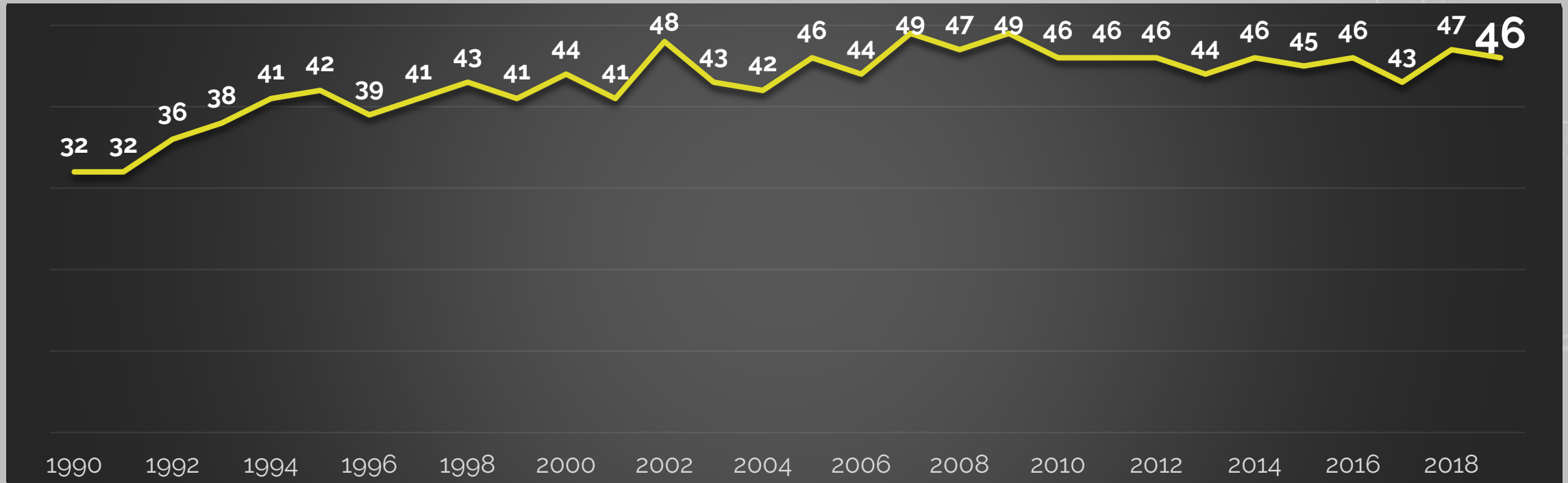
HEALTH



OKLAHOMA REMAINS ONE OF UNHEALTHIEST STATES

Overall Health Status Ranking, Oklahoma, 1990-2019

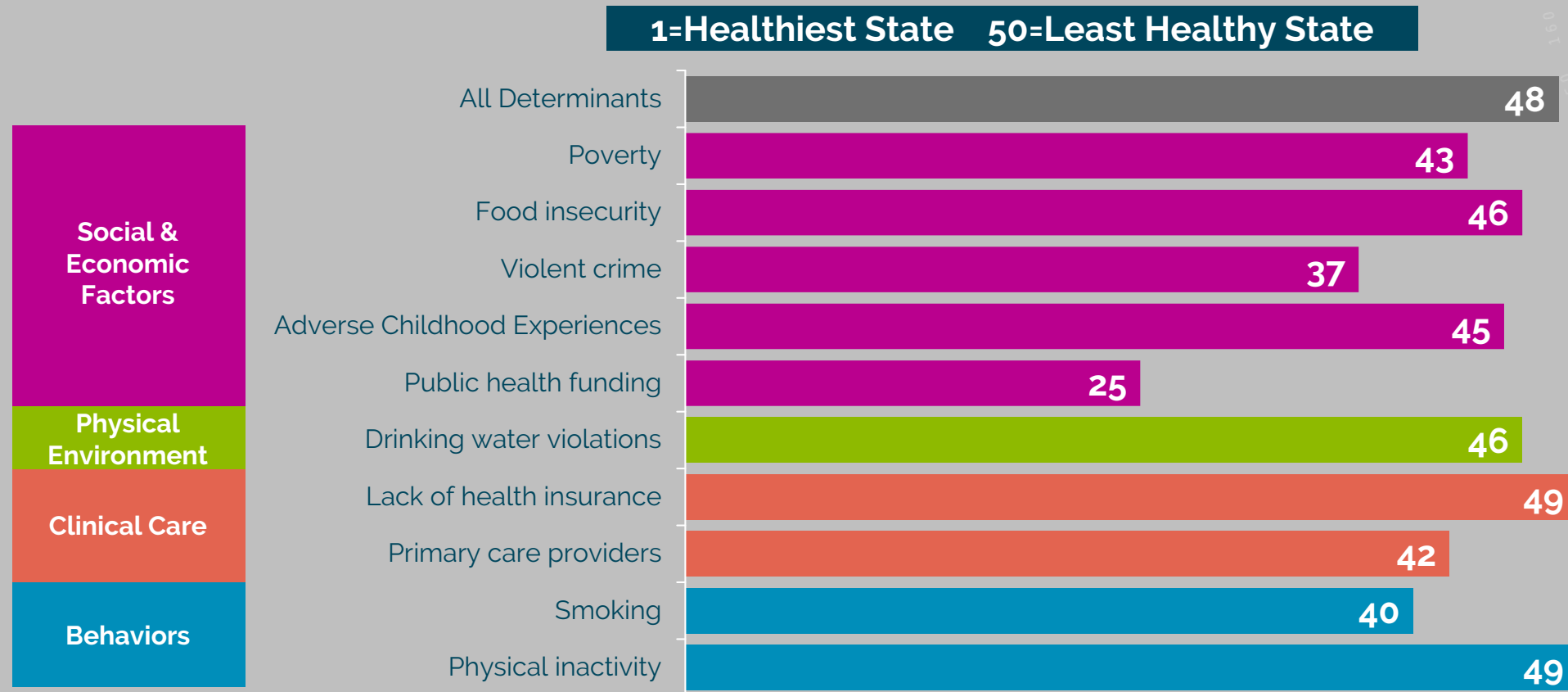
1=Healthiest State 50=Least Healthy State



Source: United Health Foundation, "America's Health Rankings 2019."

STATE RANKS POORLY ON DETERMINANTS OF HEALTH

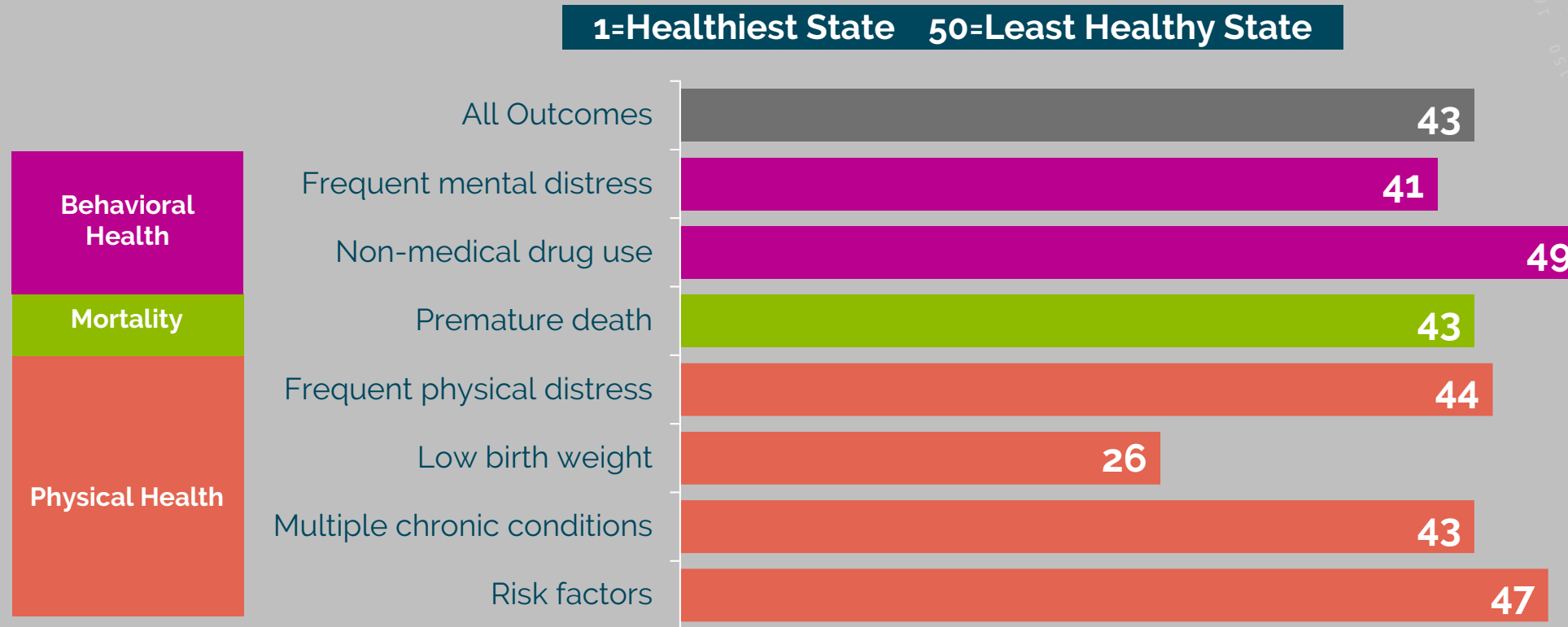
Health Determinants Rankings, Oklahoma, 2020



Source: United Health Foundation, "America's Health Rankings 2020."

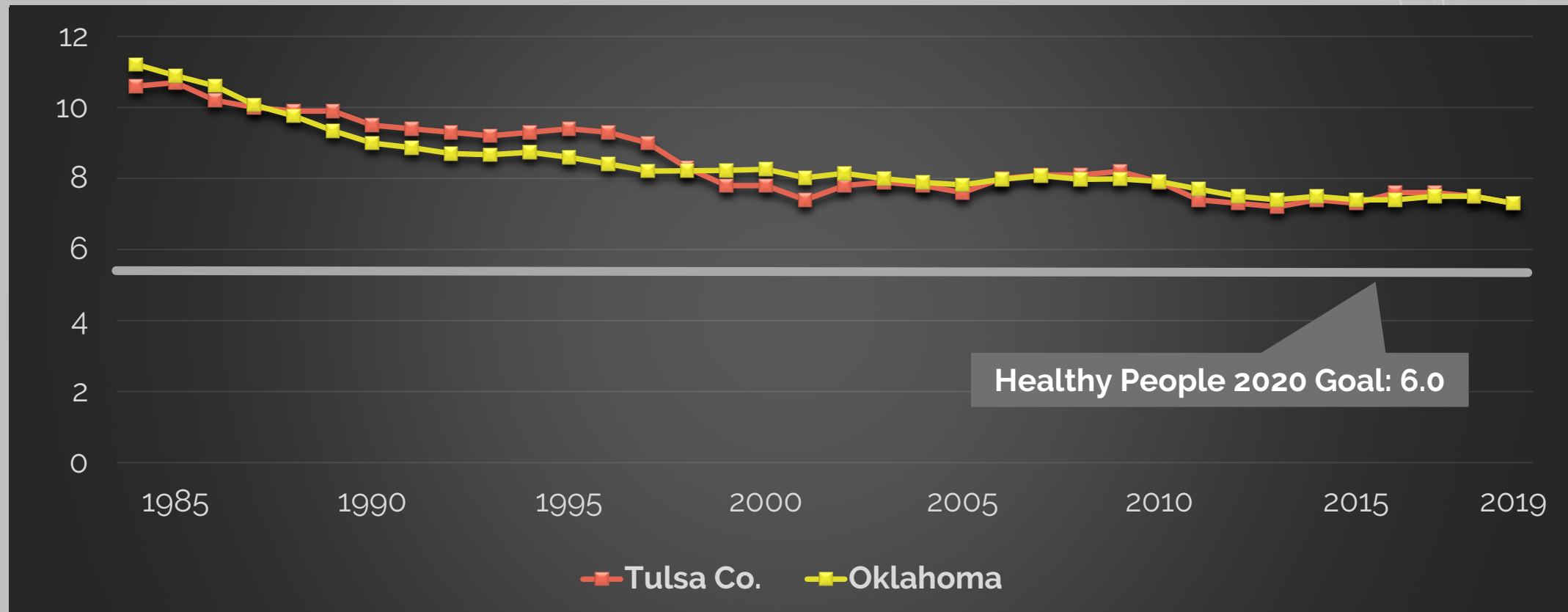
STATE RANKS POORLY ON HEALTH OUTCOMES

Health Outcomes Rankings, Oklahoma, 2020



RATES OF INFANT DEATH REMAIN HIGH

Infant Mortality Rates (5-yr Avg), Tulsa County & Oklahoma, 1984-2019

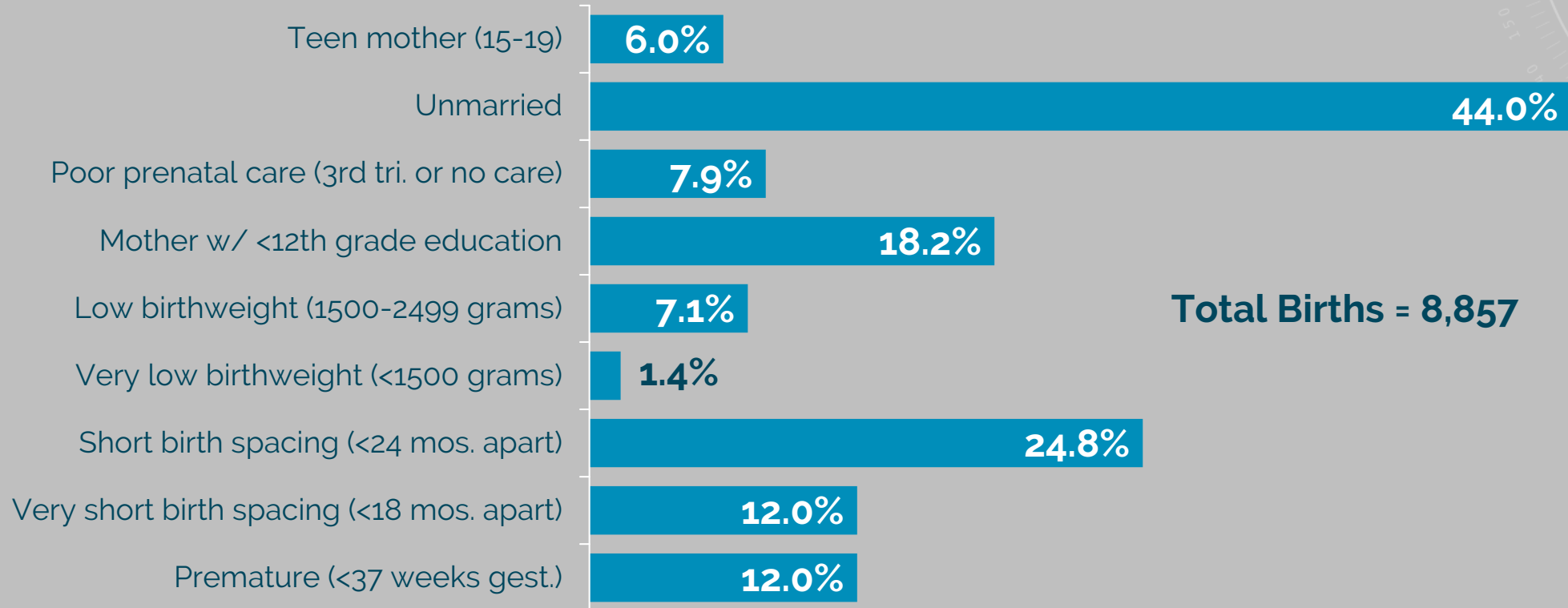


Note: Infant mortality rate (IMR) is calculated as the number of deaths of infants between birth and one year of age per 1,000 live births.

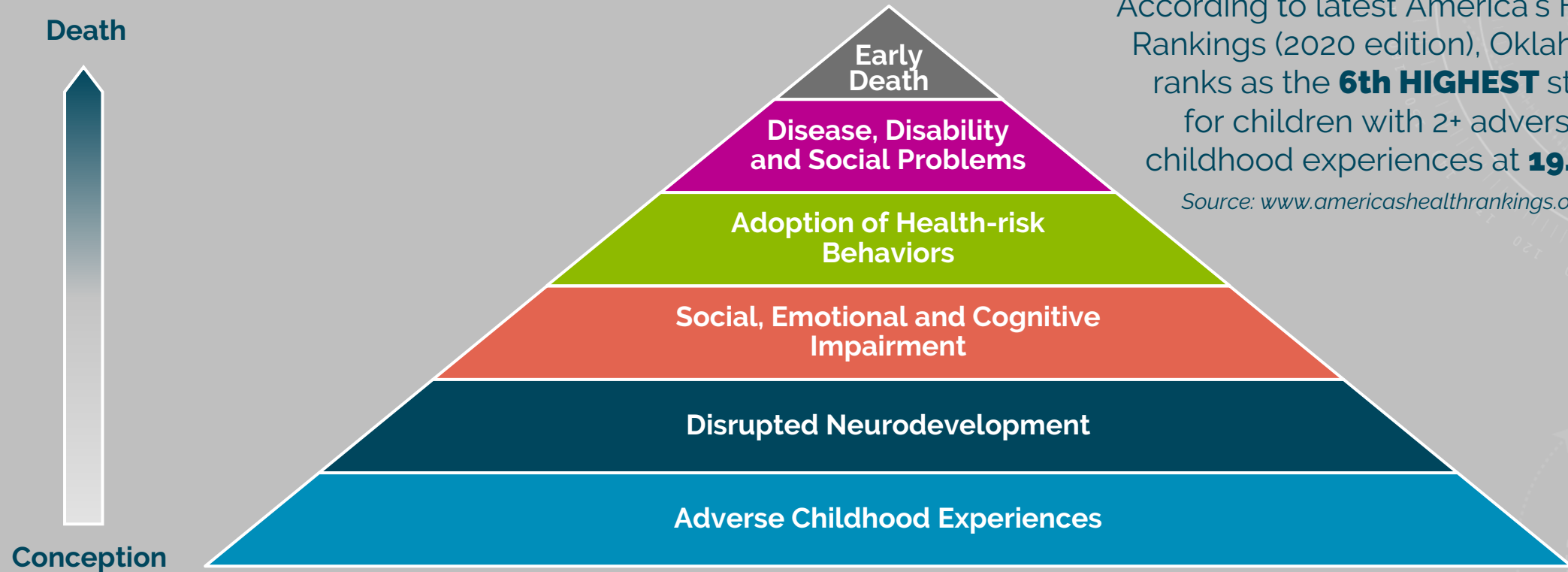
Source: Oklahoma State Department of Health, Vital Statistics 2019, OK2SHARE, accessed on 8/3/21.

MANY INFANTS BORN FACING CHALLENGES

Summary Of Risk Factors For Infants, Tulsa County, 2019



ADVERSE CHILDHOOD EXPERIENCES (ACEs) PYRAMID



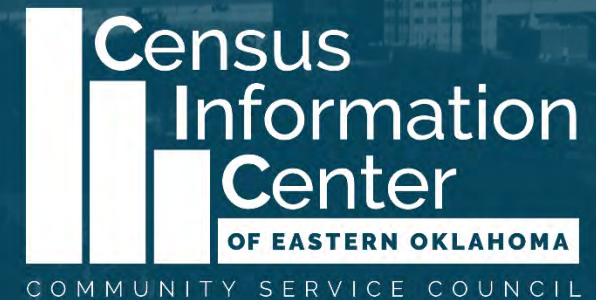
According to latest America's Health Rankings (2020 edition), Oklahoma ranks as the **6th HIGHEST** state for children with 2+ adverse childhood experiences at **19.8%**.

Source: www.americashealthrankings.org

Mechanisms by which Adverse Childhood Experiences Influence Health and Well-being throughout the Lifespan

Source: The Adverse Childhood Experiences Study website: www.acestudy.org.

COMMUNITY PROFILE



Prepared by the Community Service Council, August 2021
To schedule a presentation of this data, please email Melanie Poulter, CSC Director
of Innovative Data & Research, at mpoulter@csctulsa.org

[CSCTULSA.ORG/CENSUS](https://csctulsa.org/census)