




Welcome to the Justice Session of Tulsa Equality Indicators Data for Action Learning Series!

We'll begin shortly.

While you wait:

- ❖ Please add your name, organization, and what you hope to learn in the chat
- ❖ For optimal viewing, select speaker view using  View

Housekeeping:

- ❖ Enter your questions in the chat; please preface with "Question:"
- ❖ Include name if your question is directed toward a particular panelist
- ❖ If sharing a resource, please start with "Resource:" in the chat



TULSA
EQUALITY
INDICATORS



CITY OF
Tulsa
A New Kind of Energy.

TULSA EQUALITY INDICATORS



COMMUNITY
SERVICE
COUNCIL

Improving Oklahomans' Lives Through
Research, Planning & Action

LEARNING SERIES: DATA FOR ACTION

Justice

April 30, 2021



Agenda

Overview of Equality Indicators Report & Justice Results

- Krystal Reyes, City of Tulsa
- Melanie Poulter, Community Service Council

Individual Topic Data Discussion

- *Moderator: Leticia Calvillo, City of Tulsa*
- Damion Shade, Oklahoma Policy Institute
- Chief Wendell Franklin, Tulsa Police Department
- Maura Guten, Child Abuse Network

Panel Discussion and Q&A: Program & Service Providers

- *Moderator: Leticia Calvillo, City of Tulsa*
- Suzann Stewart, Family Safety Center
- Buck West, 1st Step Male Diversion Program
- Kristina Saleh, Still She Rises

Closing Remarks & Next Steps



TULSA
EQUALITY
INDICATORS



Background



TULSA
EQUALITY
INDICATORS



What is Tulsa Equality Indicators?



TULSA
EQUALITY
INDICATORS

Framework to measure:

- Inequality in outcomes & opportunities
 - For different groups of Tulsans
 - Over a broad range of topics
 - And to track change over time

Customized specifically for Tulsa



What is the purpose of Equality Indicators?

- Identify areas to focus equity efforts
- Guide public policy development to reduce inequalities
- Inform solutions that lead to improved opportunities and outcomes for Tulsans with a focus on equity
- Identify trends reflecting possible impact of changes in policy and practice



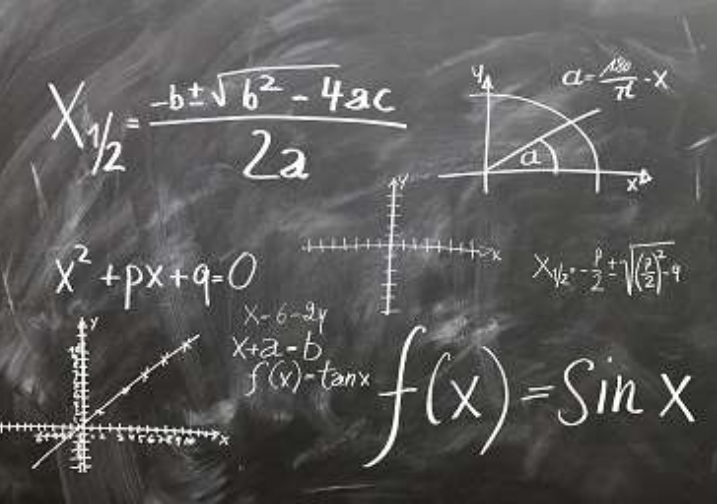
TULSA
EQUALITY
INDICATORS



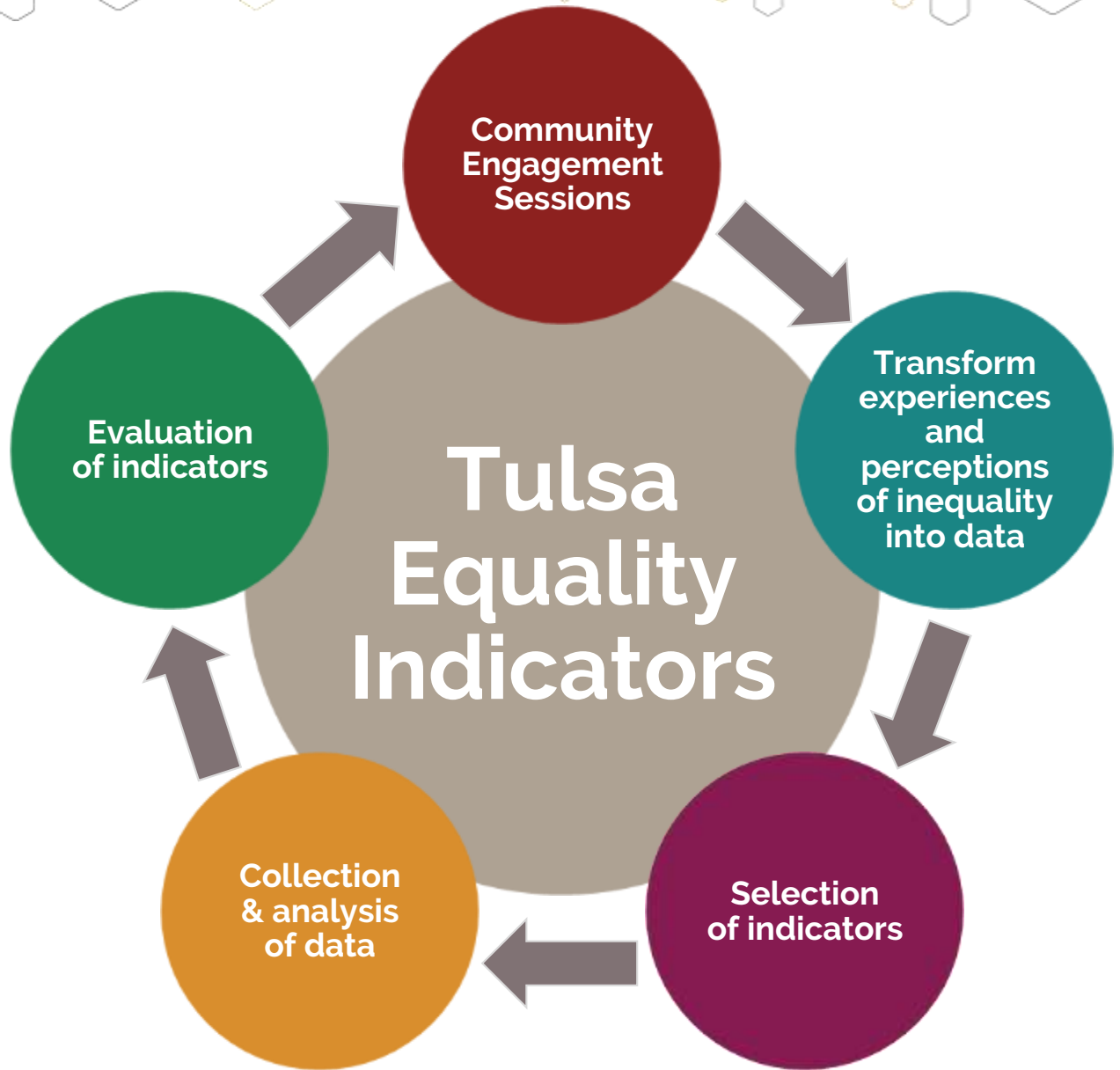
Methodology



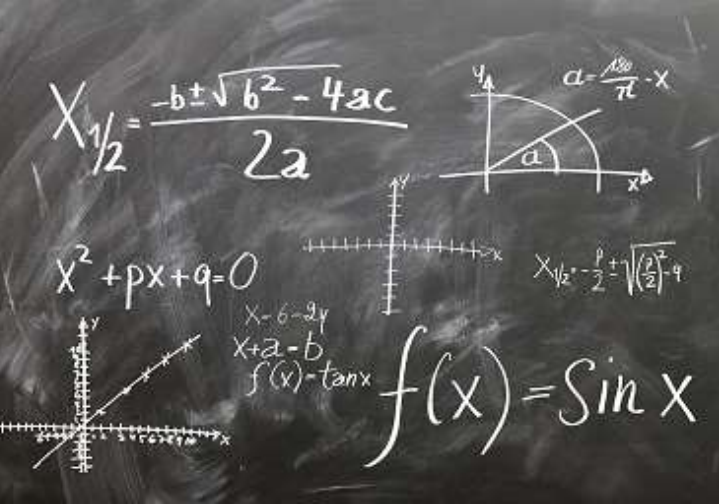
TULSA
EQUALITY
INDICATORS



Process



TULSA
EQUALITY
INDICATORS



Six Themes of Tulsa Equality Indicators



TULSA
EQUALITY
INDICATORS



ECONOMIC
OPPORTUNITY



SERVICES



EDUCATION



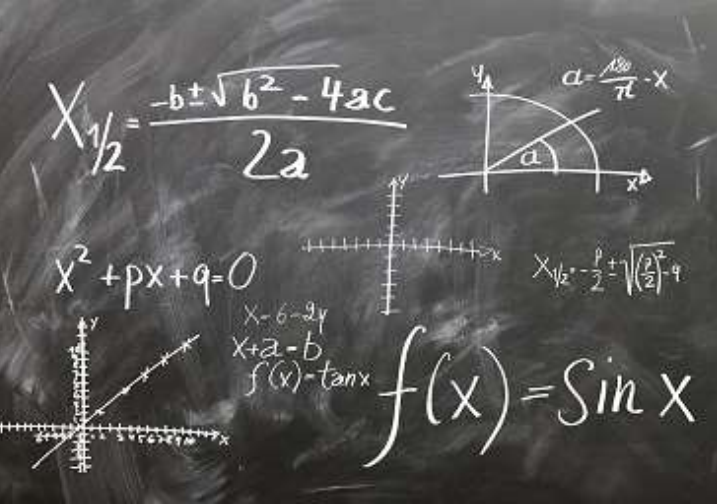
PUBLIC
HEALTH



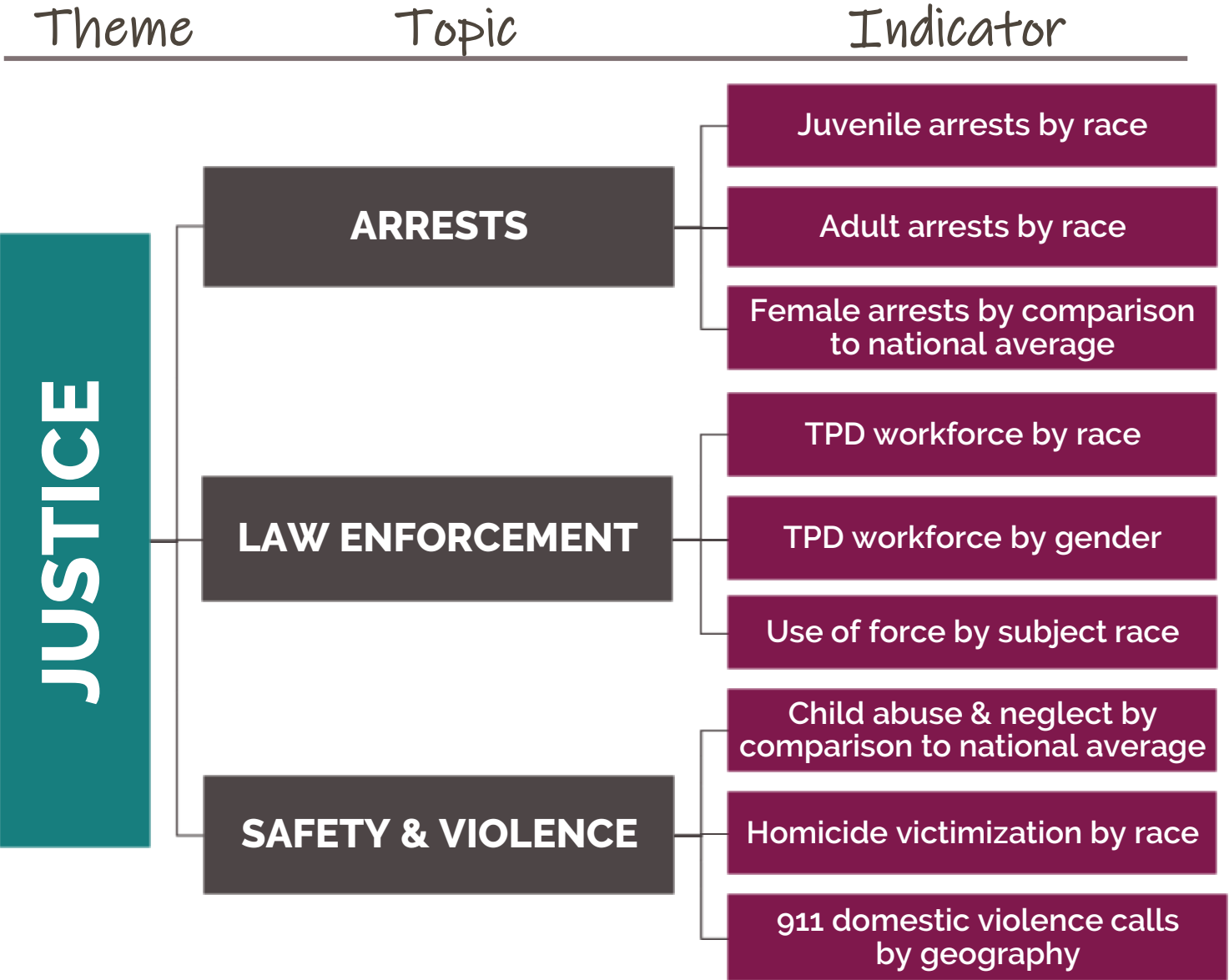
HOUSING

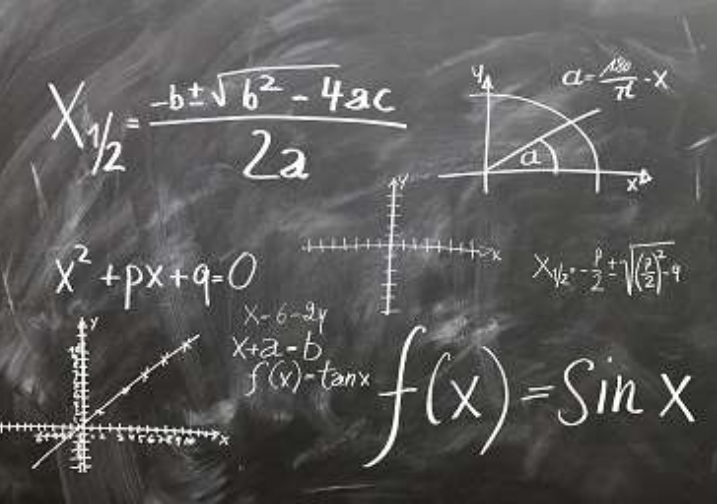


JUSTICE



Tool Structure

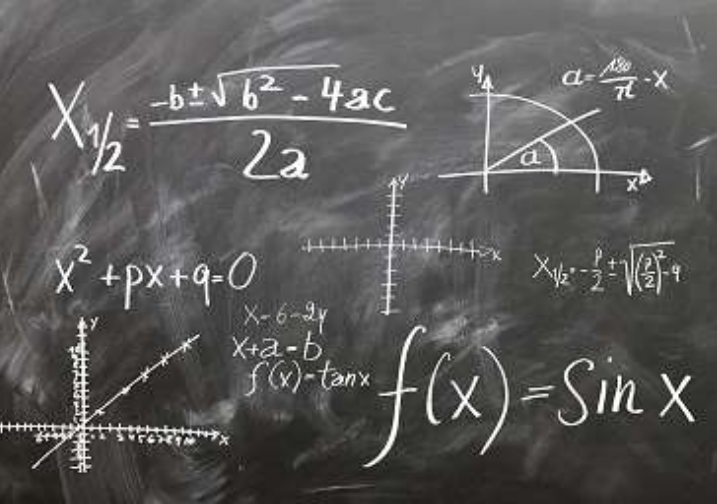




What is an Equality Indicator?

An **Equality Indicator** compares opportunities and outcomes of two population groups: the most and least advantaged for that measure
Example: Juvenile arrests by race





Scoring Methodology





2020 Scores



TULSA
EQUALITY
INDICATORS

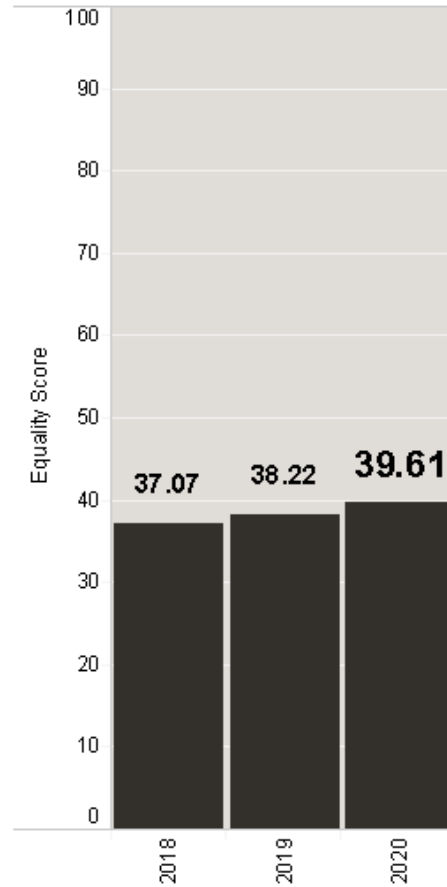


Tulsa City & Theme Scores

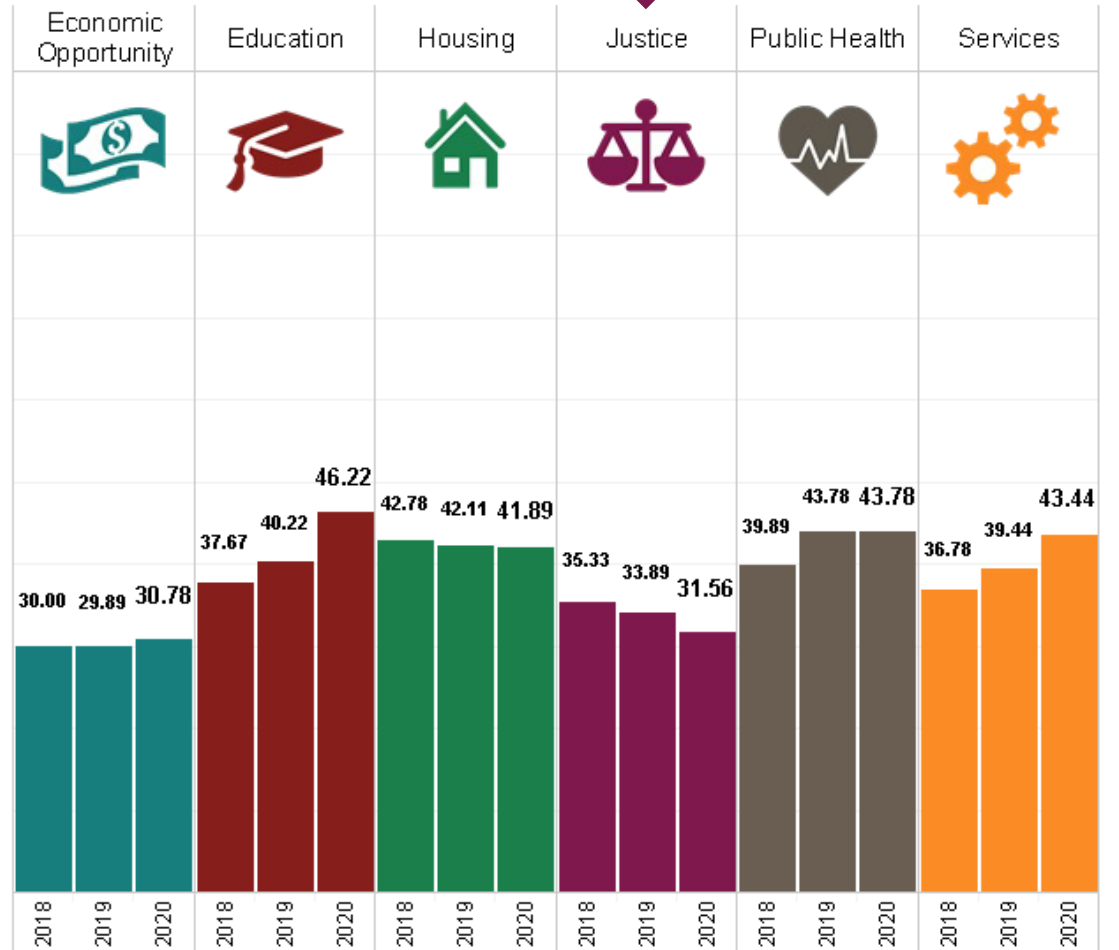


TULSA
EQUALITY
INDICATORS

City of Tulsa Score



Theme Scores





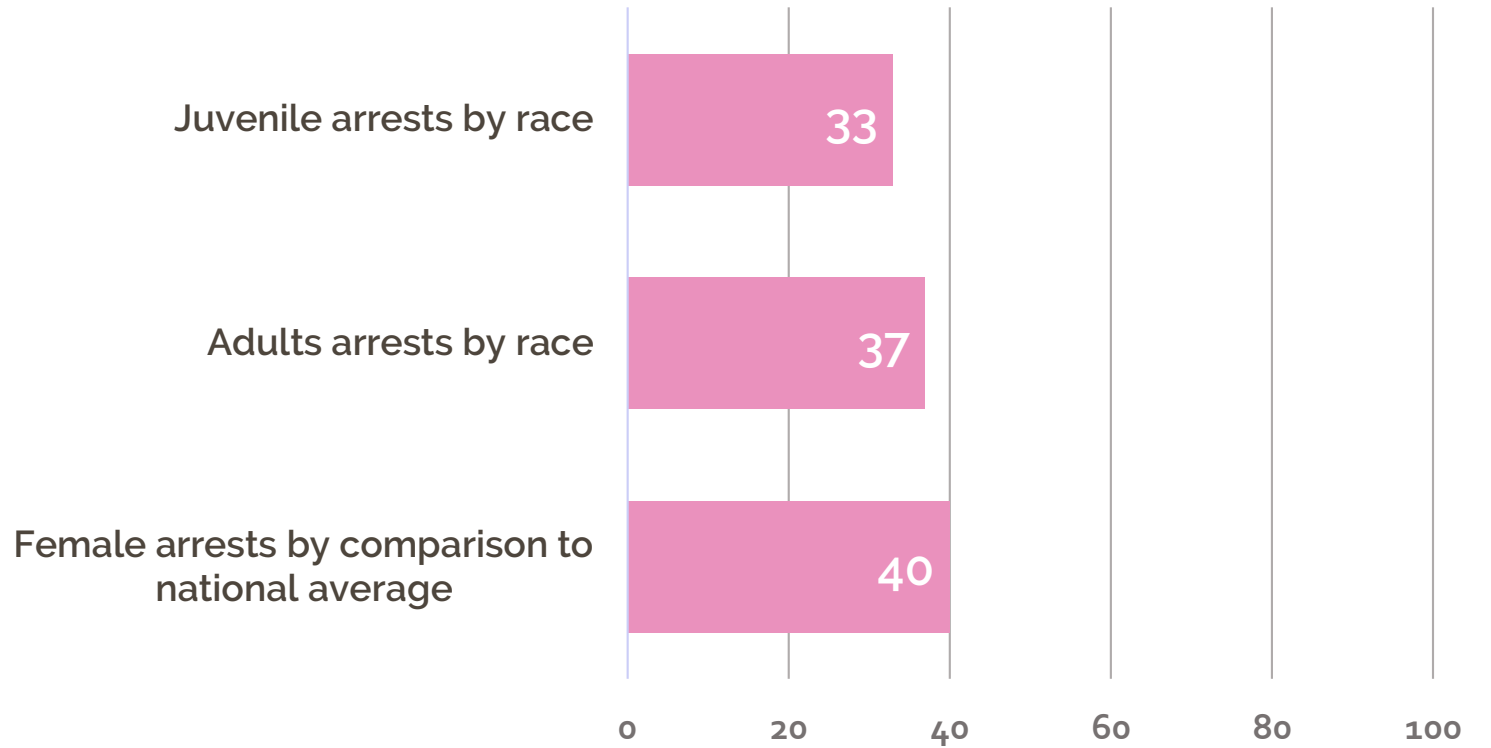
Topic: ARRESTS

Equality score = 36.67

Justice 2020 Scores: Arrests



TULSA
EQUALITY
INDICATORS





Topic: ARRESTS



Damion Shade

Criminal Justice Policy Analyst,
Oklahoma Policy Institute



TULSA
EQUALITY
INDICATORS



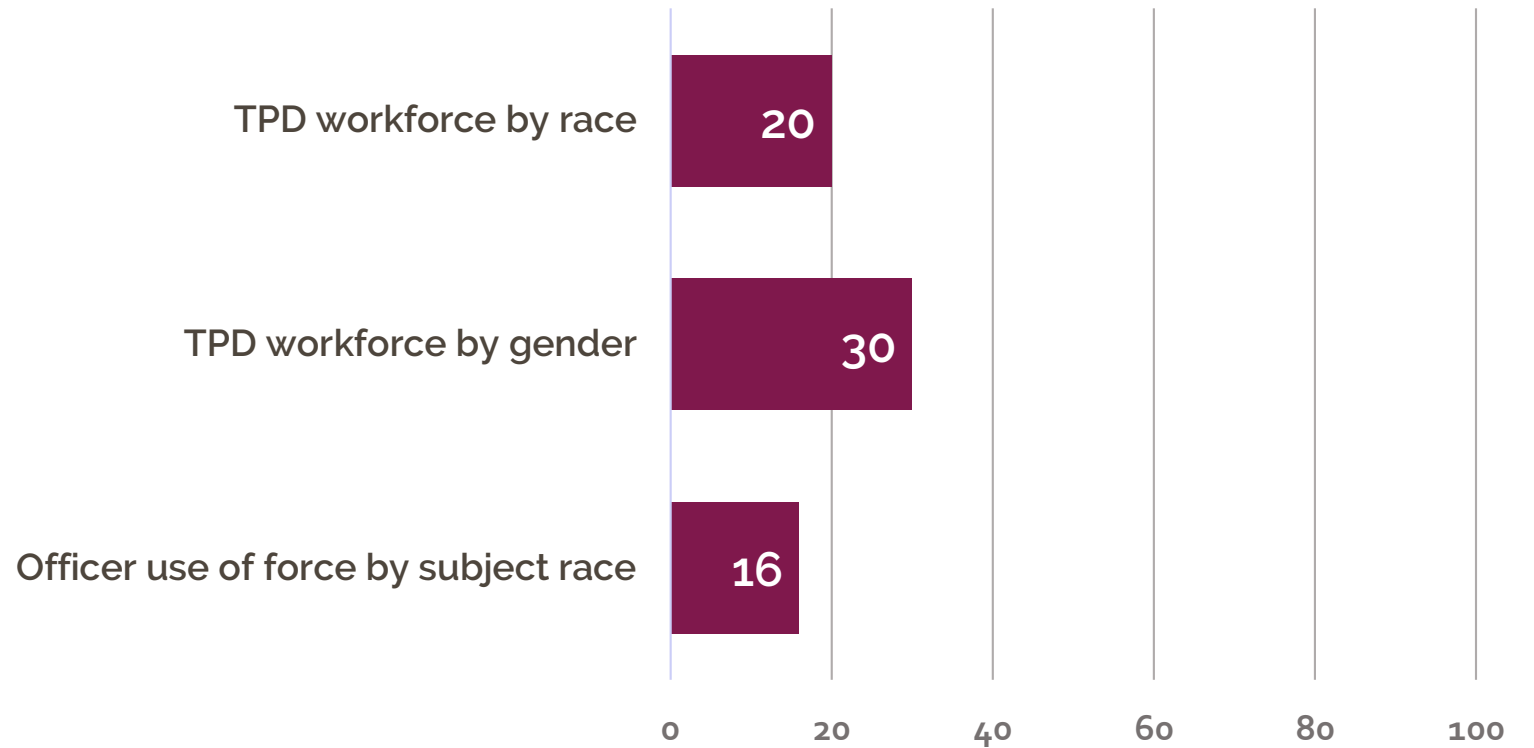
Justice 2020 Scores: Law Enforcement



TULSA
EQUALITY
INDICATORS

Topic: LAW ENFORCEMENT

Equality score = 22.00





Topic: LAW ENFORCEMENT



Chief Wendell Franklin

Chief of Police, Tulsa Police Department



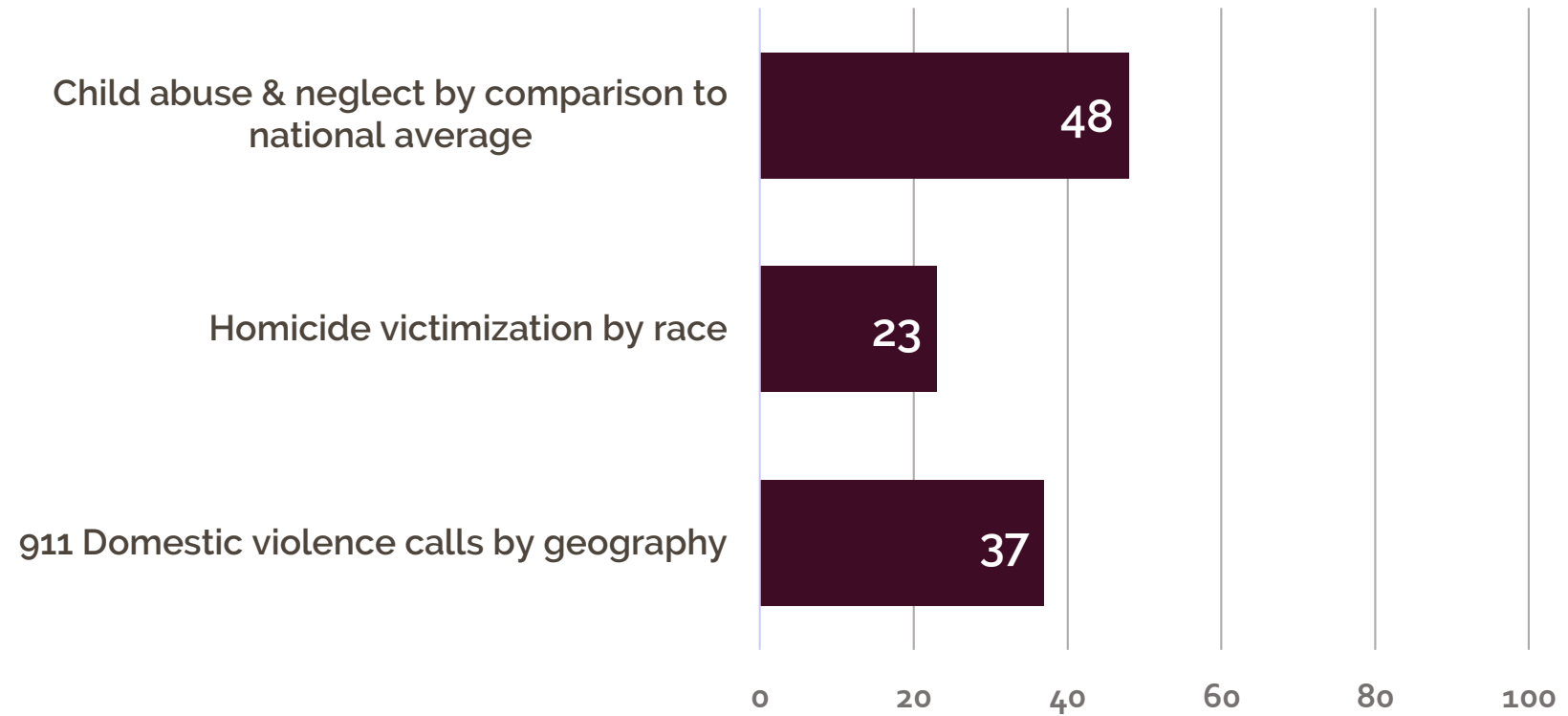
TULSA
EQUALITY
INDICATORS



Topic: SAFETY & VIOLENCE

Equality score = 36.00

**Justice
2020 Scores:
Safety &
Violence**



**TULSA
EQUALITY
INDICATORS**



TOPIC: SAFETY & VIOLENCE



Maura Guten

President & CEO, Child Abuse Network



TULSA
EQUALITY
INDICATORS



Panel Discussion



TULSA
EQUALITY
INDICATORS



Panelists



Suzann M. Stewart

Executive Director, Family Safety Center



Buck West

Program Manager,
1st Step Male Diversion Program



Kristina Saleh

Program Director, Still She Rises



TULSA
EQUALITY
INDICATORS



Thank you for
attending
today's event!

Register for other learning
series sessions, view the
report and more at:

tulsaei.org

