




Welcome to the Housing Session of Tulsa Equality Indicators Data for Action Learning Series!



We'll begin shortly.

While you wait:

- ❖ Please add your name, organization, and what you hope to learn in the chat
- ❖ For optimal viewing, select speaker view using  View

Housekeeping:

- ❖ Enter your questions in the chat; please preface with "Question:"
- ❖ Include name if your question is directed toward a particular panelist
- ❖ If sharing a resource, please start with "Resource:" in the chat



TULSA
EQUALITY
INDICATORS



CITY OF
Tulsa
A New Kind of Energy.

TULSA EQUALITY INDICATORS



COMMUNITY
SERVICE
COUNCIL

Improving Oklahomans' Lives Through
Research, Planning & Action

LEARNING SERIES: DATA FOR ACTION

Housing

March 26, 2021



Agenda

- ❖ Overview of Equality Indicators Report & Housing Results
- ❖ Panel Discussion
- ❖ Q & A
- ❖ Closing Remarks & Next Steps



TULSA
EQUALITY
INDICATORS



Background



TULSA
EQUALITY
INDICATORS



What is Tulsa Equality Indicators?



TULSA
EQUALITY
INDICATORS

Framework to measure:

- ❖ Inequality in outcomes & opportunities
 - ❖ For different groups of Tulsans
 - ❖ Over a broad range of topics
 - ❖ And to track change over time

Customized specifically for Tulsa



What is the purpose of Equality Indicators?



TULSA
EQUALITY
INDICATORS

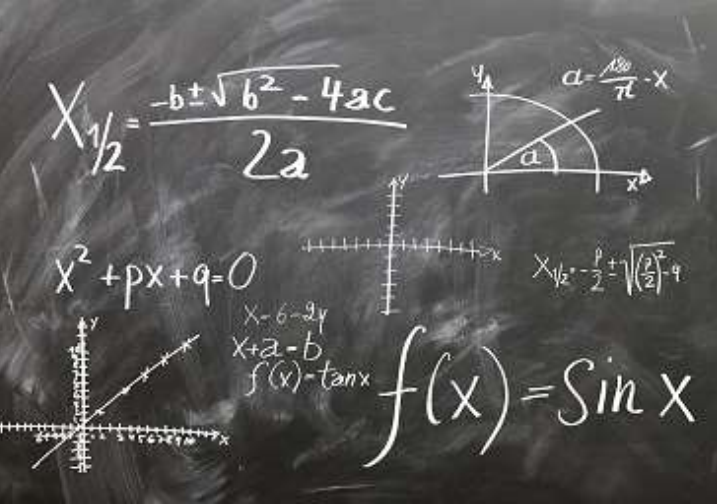
- ❑ Identify areas to focus equity efforts
- ❑ Guide public policy development to reduce inequalities
- ❑ Inform solutions that lead to improved opportunities and outcomes for Tulsans with a focus on equity
- ❑ Identify trends reflecting possible impact of changes in policy and practice



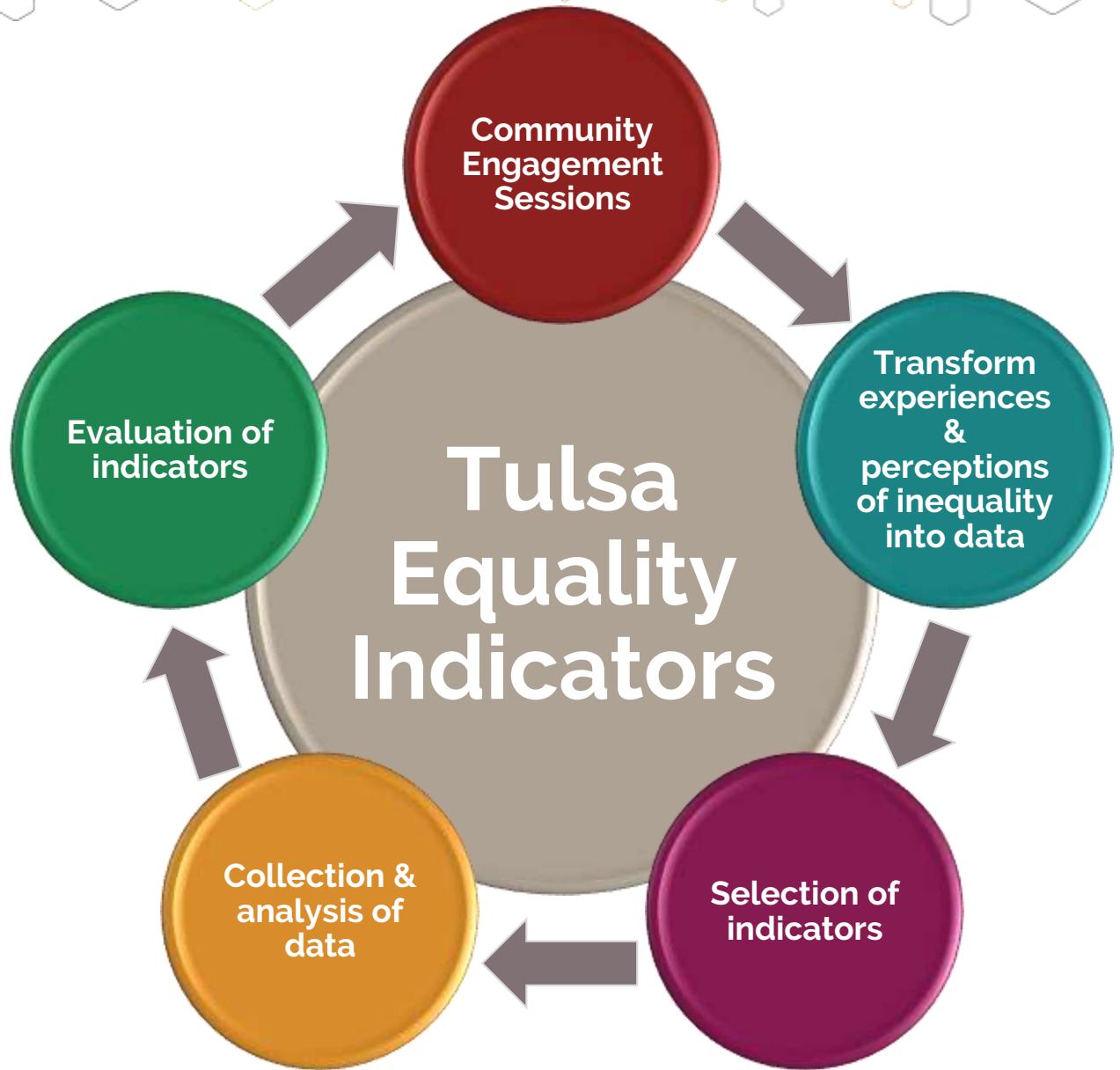
Methodology



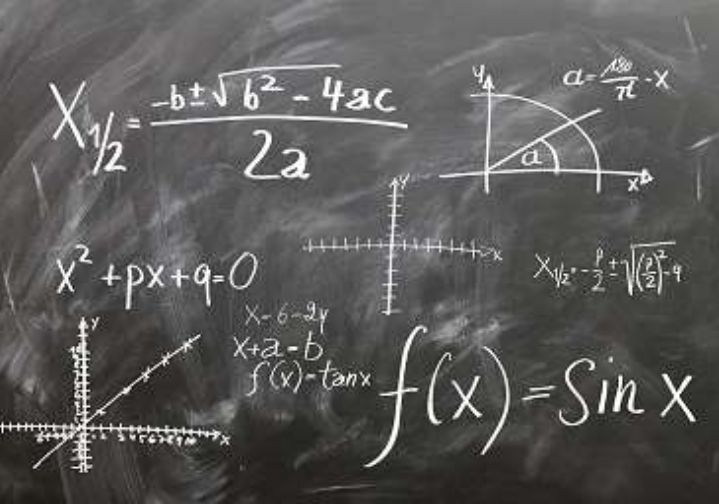
TULSA
EQUALITY
INDICATORS



Process



TULSA
EQUALITY
INDICATORS

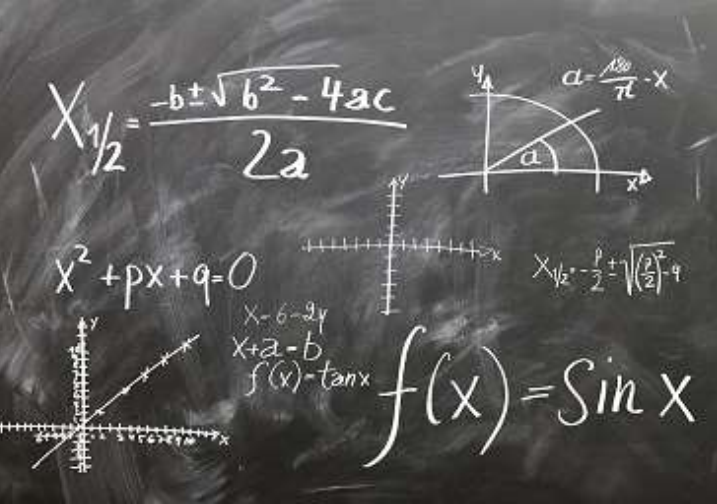


Six Themes of Tulsa Equality Indicators

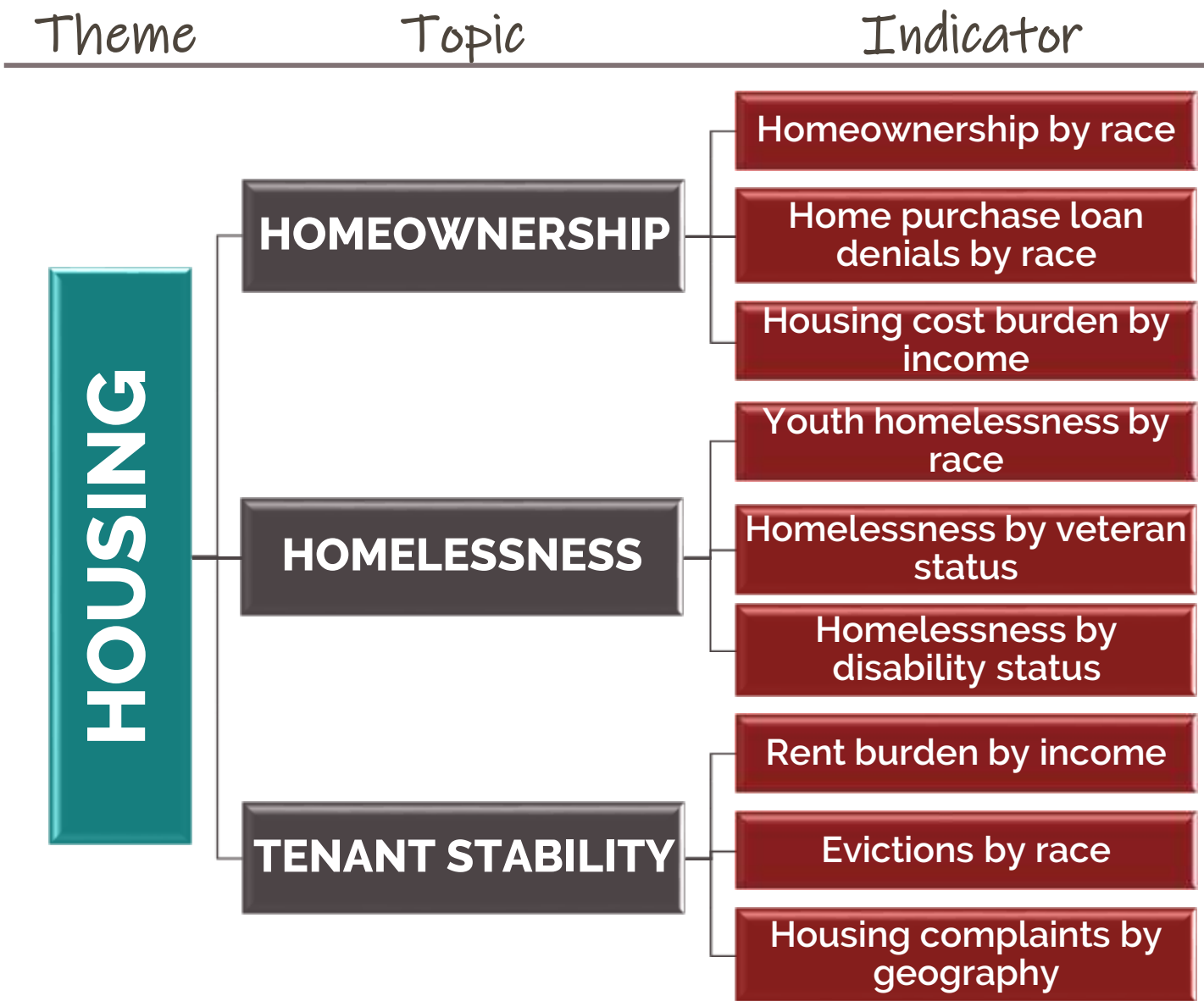


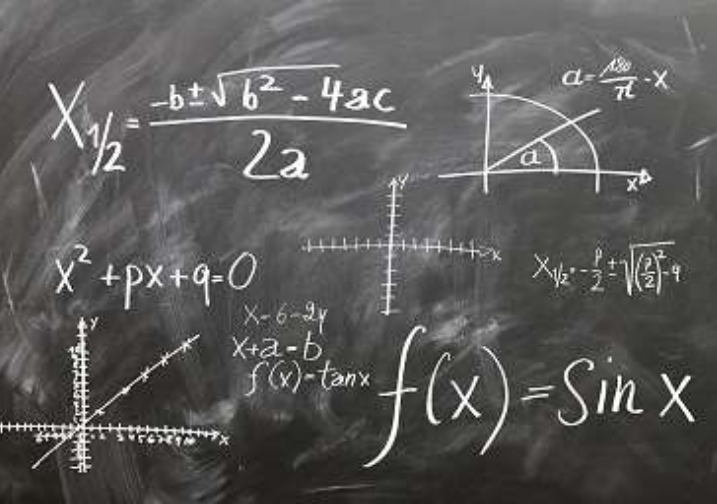
TULSA
EQUALITY
INDICATORS





Tool Structure

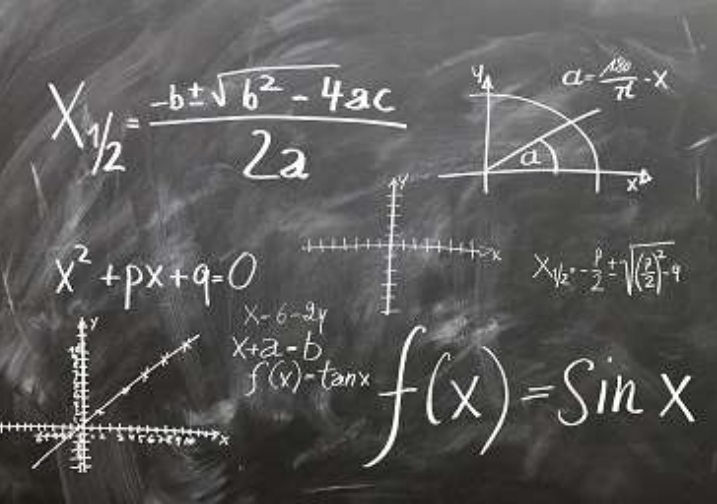




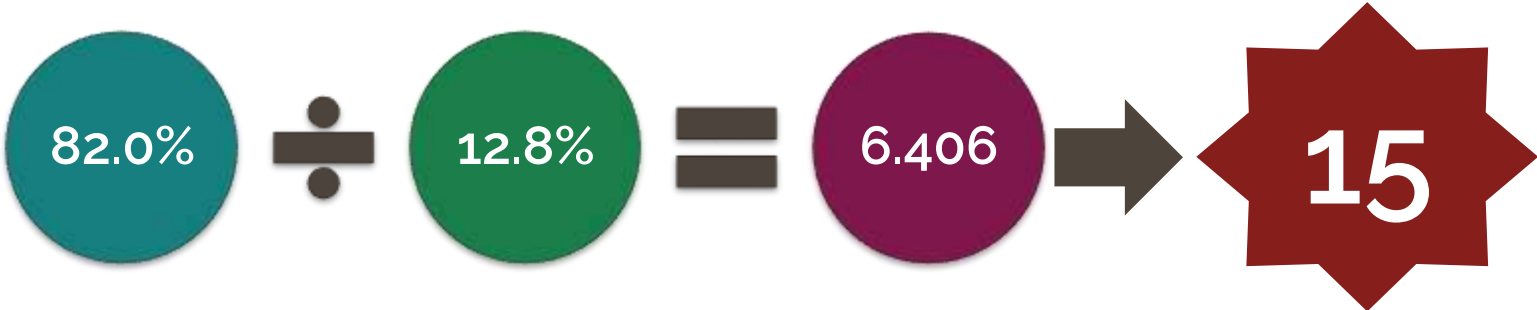
What is an Equality Indicator?

An **Equality Indicator** compares opportunities and outcomes of two population groups: the most and least advantaged for that measure
Example: Rent burden by income

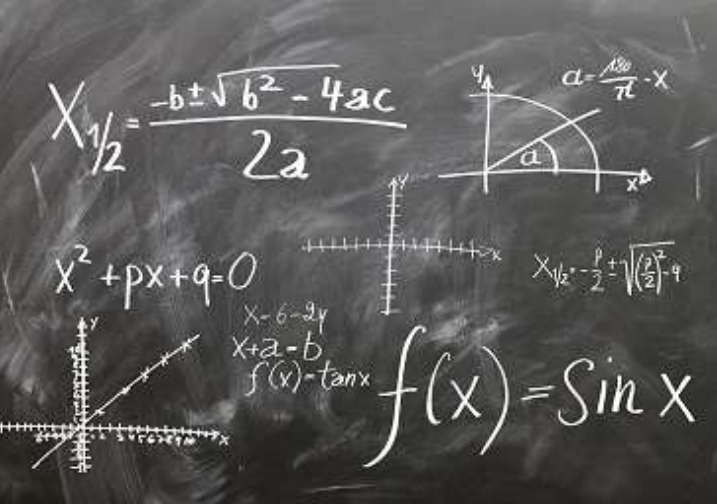




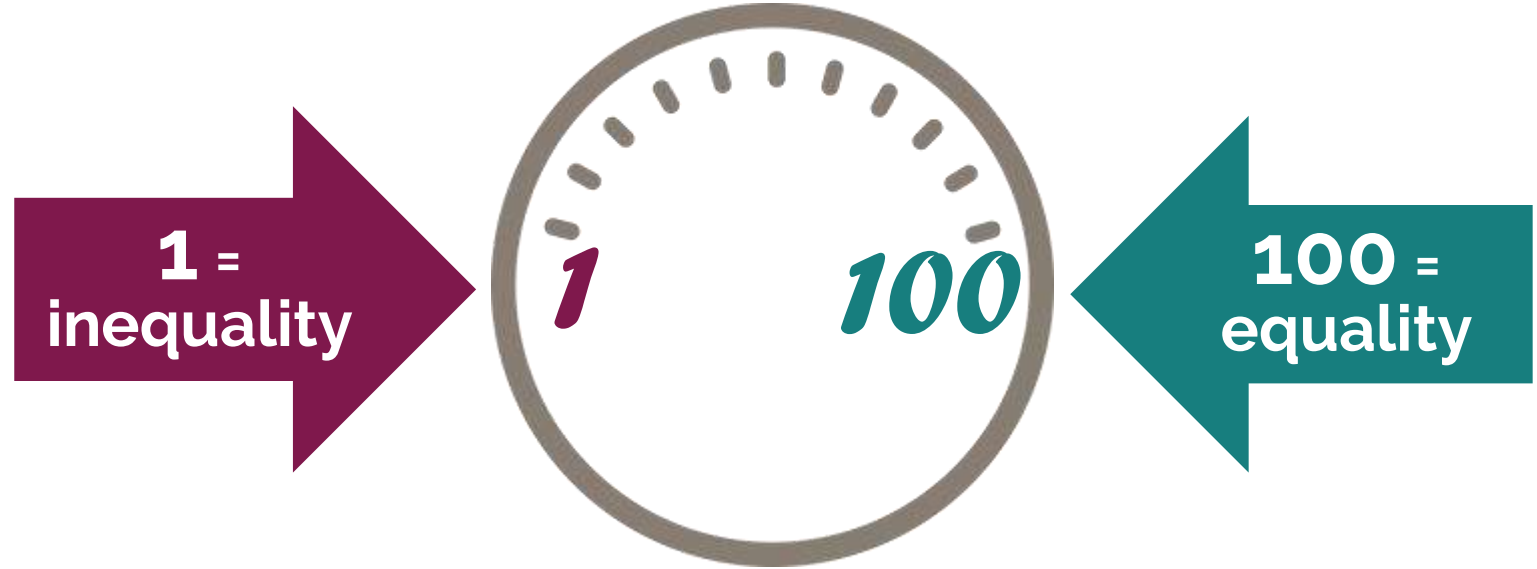
Scoring Methodology



TULSA
EQUALITY
INDICATORS



Scoring Methodology





2020 Scores



TULSA
EQUALITY
INDICATORS

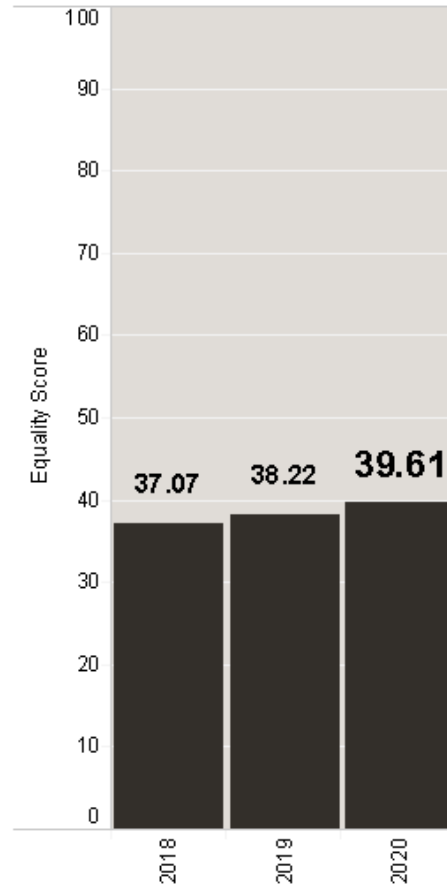


Tulsa City & Theme Scores

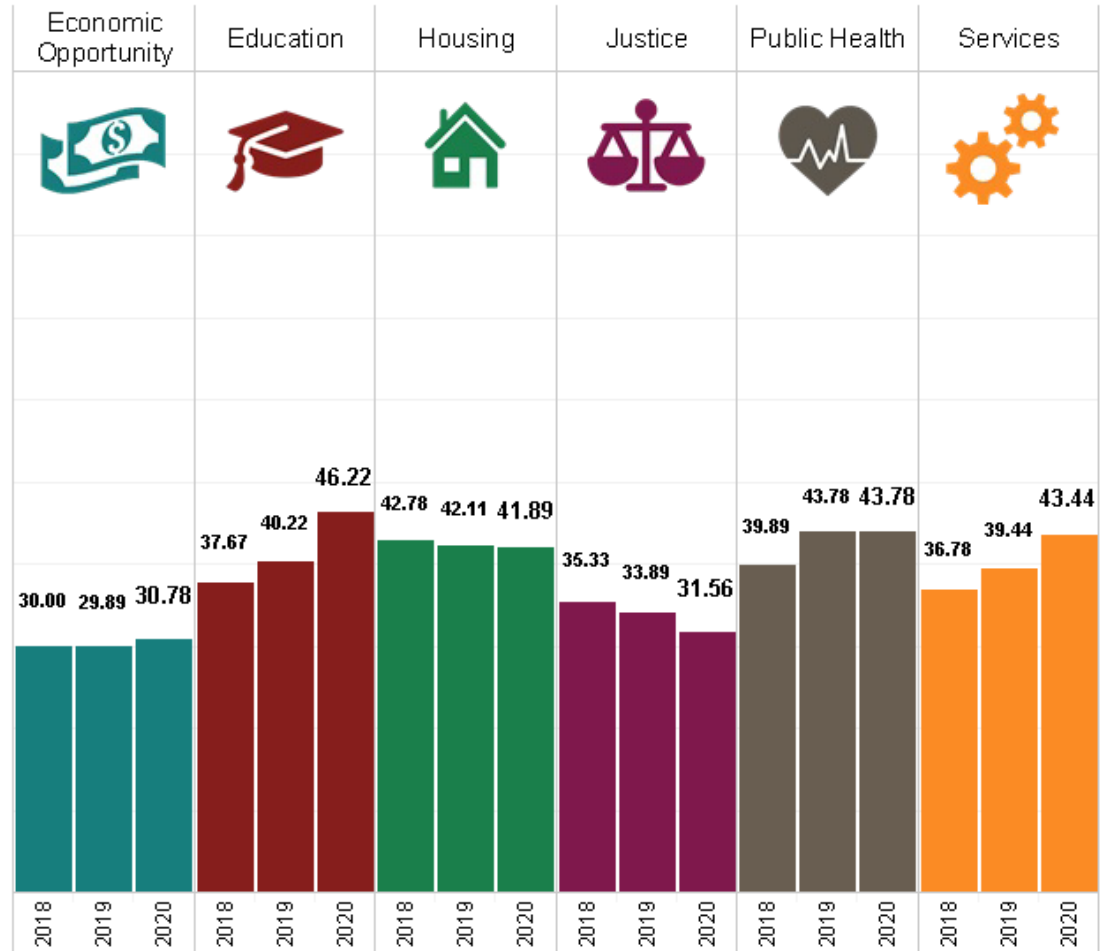


TULSA
EQUALITY
INDICATORS

City of Tulsa Score



Theme Scores





Highest & Lowest Scoring Indicators





Greatest Positive & Negative Change Indicators



TULSA
EQUALITY
INDICATORS

INDICATORS WITH GREATEST POSITIVE CHANGE SCORES	CHANGE 2018–2020
Ind. 47: Internet Access by Race	+39
Ind. 12: Dropping Out by Income	+28
Ind. 11: Chronic Absenteeism by Race	+27
Ind. 17: Graduation by English Proficiency	+15
Ind. 44: Mentally Unhealthy Days by Income	+15
Ind. 18: College Completion by Race	+13
Ind. 53: Commute Time by Mode of Transportation	+12
Ind. 52: Bus Stop Concentration by Geography	+11

INDICATORS WITH GREATEST NEGATIVE CHANGE SCORES	CHANGE 2018–2020
Ind. 34: Child Abuse and Neglect by Comparison to National Average	-20
Ind. 35: Homicide Victimization by Race	-13
Ind. 22: Youth Homelessness by Race	-9
Ind. 24: Homelessness by Disability Status	-8
Ind. 16: Third Grade Reading Proficiency by Income	-6

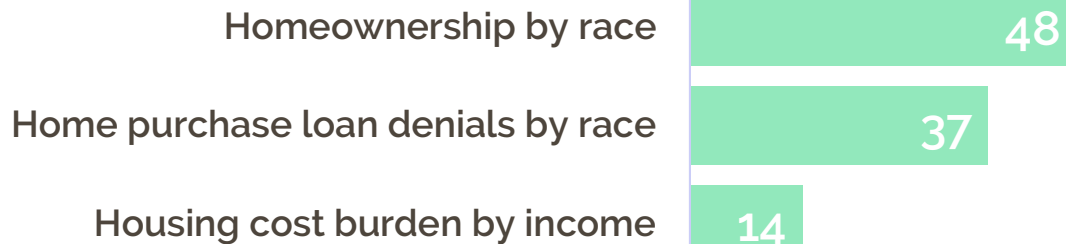


Housing 2020 Scores

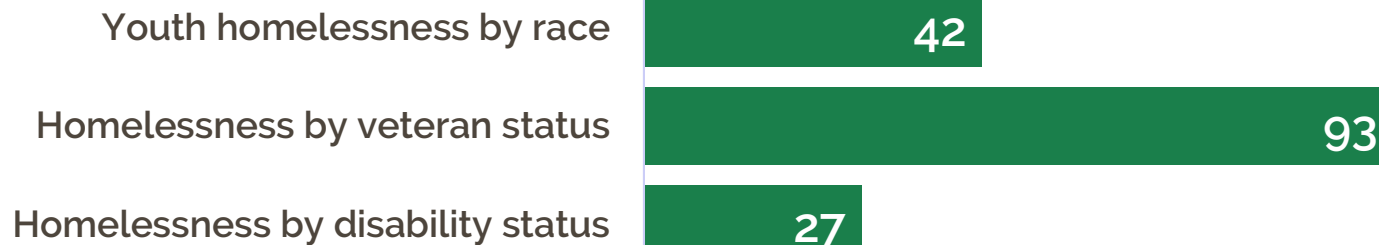


TULSA
EQUALITY
INDICATORS

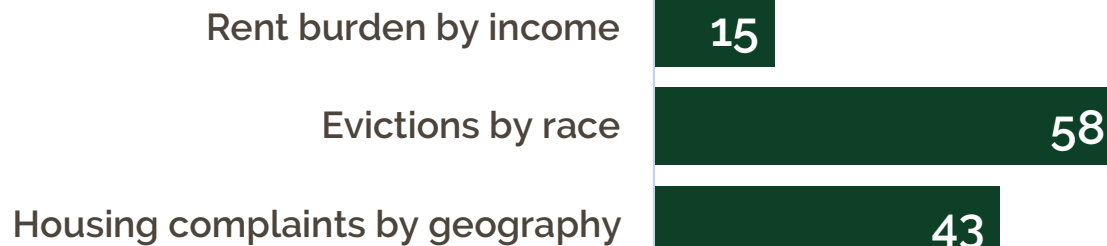
HOMEOWNERSHIP



HOMELESSNESS



TENANT STABILITY





Housing Indicator Trends & More on Website



TULSA
EQUALITY
INDICATORS



Theme: Economic Opportunity



www.tulsaei.org



Panel Discussion



TULSA
EQUALITY
INDICATORS



Panelist



Becky Gligo

**Executive Director, Housing Solutions,
(Lead agency for A Way Home for Tulsa)**



**TULSA
EQUALITY
INDICATORS**



Panelist



Elian Hurtado

**Director of Client Services,
Green Country Tulsa Habitat for Humanity**



**TULSA
EQUALITY
INDICATORS**



Panelist



Kristin Maun

**Housing Coordinator,
City of Tulsa Mayor's Office of Economic
Development**



**T U L S A
E Q U A L I T Y
I N D I C A T O R S**



Panelist



Rachel Runfola

**Director of Veteran Programs,
Community Service Council (CSC)
Supportive Services for Veterans Families (SSVF)**



**T U L S A
E Q U A L I T Y
I N D I C A T O R S**



TULSA EQUALITY INDICATORS



Measuring change toward
greater equality in Tulsa

Year 3



CUNY INSTITUTE
FOR STATE & LOCAL
GOVERNANCE

Developing Expert Solutions



COMMUNITY
SERVICE
COUNCIL
Improving Oklahomans' Lives Through
Research, Planning & Action



CITY OF
Tulsa
A New Kind of Energy.



Thank you for
attending
today's event!

Register for other learning
series sessions, view the
report and more at:

tulsaei.org

